

TECHNICAL MANUAL

DIRECT SUPPORT MAINTENANCE REPAIR  
PARTS AND SPECIAL TOOLS LISTS  
FOR

AIRCRAFT NICKEL  
CADMIUM BATTERIES

BB-432/A (NSN 6140-00-753-2249)  
BB-432A/A (NSN 6140-01-072-3125)  
BB-432B/A (NSN 6140-01-134-2277)  
BB-433/A (NSN 6140-00-753-2251)  
BB-433A/A (NSN 6140-01-046-1116)  
BB-434/A (NSN 6140-00-753-2252)  
BB-476/A (NSN 6140-01-061-2818)  
BB-641/A (NSN 6140-00-930-5130)  
BB-649/A (NSN 6140-00-980-0025)  
BB-649A/A (NSN 6140-01-068-8572)  
BB-667/A (NSN 6140-00-075-5574)  
BB-676/A (NSN 6140-00-228-8447)  
BB-678/A (NSN 6140-00-179-8382)  
BB-678A/A (NSN 6140-01-150-5381)  
BB-708/U (NSN 6140-01-032-4285)  
A N D  
BB-716/A (NSN 6140-01-089-8134)



TECHNICAL MANUAL }  
NO.11-6140-203-30P-2 }

**HEADQUARTERS  
DEPARTMENT OF THE ARMY  
WASHINGTON, DC, 5 March 1984**

DIRECT SUPPORT, MAINTENANCE  
REPAIR PARTS AND SPECIAL TOOLS LIST  
FOR

**AIRCRAFT NICKEL CADMIUM BATTERIES**

BB-432/A (NSN 6140-00-753-2249), BB-432A/A (NSN 6140-01-072-3125)  
BB-432B/A (NSN 6140-01-134-2277), BB-433/A (NSN 6140-00-753-2251)  
BB-433A/A (NSN 6140-01-046-1116), BB-434/A (NSN 6140-00-753-2252)  
BB-476/A (NSN 6140-01-061-2818), BB-641/A (NSN 6140-00-930-5130)  
BB-649/A (NSN 6140-00-980-0025), BB-649A/A (NSN 6140-01-068-8572)  
BB-667/A (NSN 6140-00-075-5574), BB-676/A (NSN 6140-00-228-8447)  
BB-678/A (NSN 6140-00-179-8382), BB-678A/A (NSN 6140-01-150-5381)  
BB-708/U (NSN 6140-01-032-4285), AND  
BB-716/A (NSN 6140-01-089-8134)

**Current as of 1 February 1984**

**REPORTING ERRORS AND RECOMMENDING IMPROVEMENTS**

**You can help improve this manual. If you find any mistakes or if you know of a way to improve the procedures, please let us know. Mail your letter, DA Form 2028 (Recommended Changes to Publications and Blank Forms), or DA Form 2028-2 located in the back of this manual direct to Commander, US Army Communications-Electronics Command and Fort Monmouth, ATTN: DR-SEL-ME-MP, Fort Monmouth, NJ 07703.**

**In either case, a reply will be furnished direct to you.**

**Table of Contents**

SECTION		Page	Illus Figure
	I. <b>Introduction</b> .....	1	
	II. Repair Parts List.....	5	
GROUP	00 Battery, Storage BB-432/A, BB-432A/A and BB-432B/A.....	5	1
	01 Battery, Storage Cell BB-599/A, BB-599A/A, PN 17180, PN 27420, BB-600/A, PN 18191-15, PN 43B022AC02, PN X16962-4, BB-475/A, BB-652/A, BB-652A/A, BB-648/A, BB-648A/A, and PN 26349-8.....	7	2
	00 Battery, Storage BB-433/A and BB-433A/A.....	9	3
	00 Battery, Storage BB-434/A.....	11	4
	00 Battery, Storage BB-476/A.....	13	5
	00 <b>Battery, Storage BB-641/A</b> .....	15	6
	00 Battery, Storage BB-649/A and BB-649A/A.....	17	7
	00 <b>Battery, Storage BB-667/A</b> .....	19	8
	00 Battery, Storage BB-676/A.....	21	9
	00 Battery, Storage BB-678/A and BB-678A/A.....	23	10
	00 Battery, Storage BB-708/U.....	27	11
	00 Battery, Storage BB-716/A.....	29	12
SECTION	III. <b>Special Tools List (Not applicable)</b>		
	IV. <b>National Stock Number and Part Number Index</b> .....	30	

# SECTION I

## INTRODUCTION

---

### 1. Scope

This manual lists spares and repair parts; special tools; special test, measurement, and diagnostic equipment (TMDE), and other special support equipment required for performance of direct support maintenance of Aircraft Nickel Cadmium Batteries. It authorizes the requisitioning and issue of spares and repair parts as indicated by the source and maintenance codes.

### 2. General

This Repair Parts and Special Tools List is divided into the following sections:

*a. Section II. Repair Parts List.* A list of spares and repair parts authorized for use in the performance of maintenance. The list also includes parts which must be removed for replacement of the authorized parts. Parts lists are composed of functional groups in numeric sequence, with the parts in each group listed in figure and item number sequence.

*b. Section III. Special Tools List.* Not applicable.

*c. Section IV. National Stock Number and Part Number Index.* A list, in National item identification number (NIIN) sequence, of all National stock numbers (NSN) appearing in the listings, followed by a list, in alphameric sequence, of all part numbers appearing in the listings. National stock numbers and part numbers are cross-referenced to each illustration figure and item number appearance.

### 3. Explanation of Columns

*a. Illustration.* This column is divided as follows:

(1) *Figure number.* Indicates the figure number of the illustration on which the item is shown.

(2) *Item number.* The number used to identify item called out in the illustration.

*b. Source, Maintenance, and Recoverability (SMR) Codes.*

(1) *Source code.* Source codes indicate the manner of acquiring support items for maintenance, repair, or overhaul of end items. Source codes are entered in the first and second positions of the Uniform SMR Code format as follows:

<i>Code</i>	<i>Definition</i>
PA—	Item procured and stocked for anticipated or known usage.

<i>Code</i>	<i>Definition</i>
PB—	Item procured and stocked for insurance purpose because essentiality dictates that a minimum quantity be available in the supply system.
PC—	Item procured and stocked and which otherwise would be coded PA except that it is deteriorative in nature.
PD—	Support item, excluding support equipment, procured for initial issue or outfitting and stocked only for subsequent or additional initial issues or outfittings. Not subject to automatic replenishment.
PE—	Support equipment procured and stocked for initial issue or outfitting to specified maintenance repair activities.
PF—	Support equipment which will not be stocked but which will be centrally procured on demand.
PG—	Item procured and stocked to provide for sustained support for the life of the equipment. It is applied to an item peculiar to the equipment which, because of probable discontinuance or shutdown of production facilities, would prove uneconomical to reproduce at a later time.
KD—	An item of a depot overhaul/repair kit and not purchased separately. Depot kit defined as a kit that provides items required at the time of overhaul or repair.
KF—	An item of a maintenance kit and not purchased separately. Maintenance kit defined as a kit that provides an item that can be replaced at organizational or intermediate levels of maintenance.
KB—	Item included in both a depot overhaul/repair kit and a maintenance kit.
MO—	Item to be manufactured or fabricated at organizational level.
MF—	Item to be manufactured or fabricated at the direct support maintenance level.
MH—	Item to be manufactured or fabricated at the general support maintenance level.
MD—	Item to be manufactured or fabricated at the depot maintenance level.
AO—	Item is to be assembled at organizational level.

<i>Code</i>	<i>Definition</i>
AF-	Item is to be assembled at direct support maintenance level.
AH-	Item is to be assembled at general support maintenance level.
AD-	Item is to be assembled at depot maintenance level.
XA-	Item is not procured or stocked because the requirements for the item will result in the replacement of the next higher assembly.
XB-	Item is not procured or stocked. If not available through salvage, requisition.
XC-	Installation drawing, diagram, instruction sheet, field service drawing, that is identified by manufacturer's part number.
XD-	A support item that is not stocked. When required, item will be procured through normal supply channels.

**NOTE**

Cannibalization or salvage maybe used as a source of supply for any items source coded above except those coded XA and aircraft support item as restricted by AR 750-1.

(2) *Maintenance code.* Maintenance codes are assigned to indicate the levels of maintenance authorized to USE and REPAIR support items. The maintenance codes are entered in the third and fourth positions of the Uniform SMR Code format as follows:

(a) The maintenance code entered in the third position will indicate the lowest maintenance level authorized to remove, replace, and use the support item. The maintenance code entered in the third position will indicate one of the following levels of maintenance:

<i>Code</i>	<i>Application/Explanation</i>
C-	Crew or operator maintenance performed within organizational maintenance.
O-	Support item is removed, replaced, used at the organizational level.
F-	Support item is removed, replaced, used at the direct support level.
H-	Support item is removed, replaced, used at the general support level.
D-	Support items that are removed, replaced, used at depot, mobile depot, specialized repair activity only.

(b) The maintenance code entered in the fourth positions indicates whether the item is to be repaired and identifies the lowest maintenance level with the capability to perform complete repair (i.e., all authorized maintenance functions). This position will contain one of the following maintenance codes:

<i>Code</i>	<i>Application/Explanation</i>
O-	The lowest maintenance level capable of complete repair of the support item is the organizational level.
F-	The lowest maintenance level capable of complete repair of the support item is the direct support level.
H-	The lowest maintenance level capable of complete repair of the support item-is the general support level.
D-	The lowest maintenance level capable of complete repair of the support item is the depot level.
L-	Repair restricted to designated specialized repair activity.
Z-	Nonreparable. No repair is authorized.
B-	No repair is authorized. The item may be reconditioned by adjusting, lubricating, etc., at the user level. No parts or special tools are procured for the maintenance of this item.

(3) *Recoverability code.* Recoverability codes are assigned to support items to indicate the disposition action on unserviceable items. The recoverability code is entered in the fifth position of the Uniform SMR Code format as follows:

<i>Recoverability codes</i>	<i>Definition</i>
Z-	Nonreparable item. When unserviceable, condemn and dispose at the level indicated in position 3.
O-	Reparable item. When uneconomically repairable, condemn and dispose at organizational level.
F-	Reparable item. When uneconomically repairable, condemn and dispose at the direct support level.
H-	Reparable item. When uneconomically repairable, condemn and dispose at the general support level.
D-	Reparable item. When beyond lower level repair capability, return to depot. Condemnation and disposal not authorized below depot level.
L-	Reparable item. Repair, condemnation, and disposal not authorized below depot/specialized repair activity level.
A-	Item requires special handling or condemnation procedures because of specific reasons (i.e., precious metal contents, high dollar value, critical material or hazardous material). Refer to appropriate manuals/directives for specific instructions.

c. *National Stock Number.* Indicates the National stock number assigned to the item and will be used for requisitioning purposes.

*d. Federal Supply Code for Manufacturer (FSCM).* The FSCM is a 5-digit numeric code listed in SB 708-41/42 which is used to identify the manufacturer, distributor, or Government agency, etc.

*e. Part Number.* Indicates the primary number used by the manufacturer (individual, company, firm, corporation, or Government activity), which controls the design and characteristics of the item by means of its engineering drawings, specifications, standards, and inspection requirements to identify an item or range of items.

**NOTE**

When a stock numbered item is requisitioned, the repair part received may have a different part number than the part being replaced.

*f. Description.* Indicates the Federal item name and, if required, a minimum description to identify the item.

*g. Unit of Measure (U/M).* Indicates the standard of the basic quantity of the listed item as used in performing the actual maintenance function. This measure is expressed by a two-character alphabetical abbreviation (e.g., ea, in, pr, etc). When the unit of measure differs from the unit of issue, the lowest unit of issue that will satisfy the required units of measure will be requisitioned.

*h. Quantity Incorporated in Unit.* Indicates the quantity of the item used in the breakout shown on the illustration figure, which is prepared for a functional group, subfunctional group, or an assembly.

**4. Special Information**

a. Usable on codes are shown in description column. Uncoded items are applicable to all models. Identification of the usable on codes used in this publication are:

<i>Code</i>	<i>Used on</i>
CAZ	BB-432/A
FMW	BB-432A/A
EYB	BB-432B/A
3FA	BB-433/A
EBX	BB-433A/A
3E9	BB-434/A
DW9	BB-476/A
AJS	BB-641/A
4HS	BB-649/A
EBY	BB-649A/A
4HT	BB-667/A
B35	BB-676/A
4HU	BB-678/A
FFA	BB-678A/A
DQE	BB-708/U
EJP	BB-716/A

*b.* The following publications pertain to Aircraft Nickel Cadmium Batteries and their components:  
 TM 11-6140-203-15-1, Aircraft Nickel Cadmium Batteries.

TM 11-6140-203-14-2, Aircraft Nickel Cadmium Batteries.

*c.* National stock numbers (NSN 's) that are missing from P source coded items have been applied for and will be added to this TM by future change/revision when they are entered in the Army Master Data File (AMDF). Until the NSN'S are established and published, submit exception requisitions to Commander, US Army Communications-Electronics Command and Fort Monmouth, ATTN: DRSEL-MM, Fort Monmouth, NJ 07703 for the part required to support your equipment.

**5. How to Locate Repair Parts**

*a.* When National stock number or part number is unknown.

(1) *First.* Using the table of contents, determine the functional group within which the item belongs. This is necessary since illustrations are prepared for functional groups and listings are divided into the same groups.

(2) *Second.* Find the illustration covering the functional group to which the item belongs.

(3) *Third.* Identify the item on the illustration and note the illustration figure and item number of the item.

(4) *Fourth.* Using the Repair Parts Listing, find the figure and item number noted on the illustration.

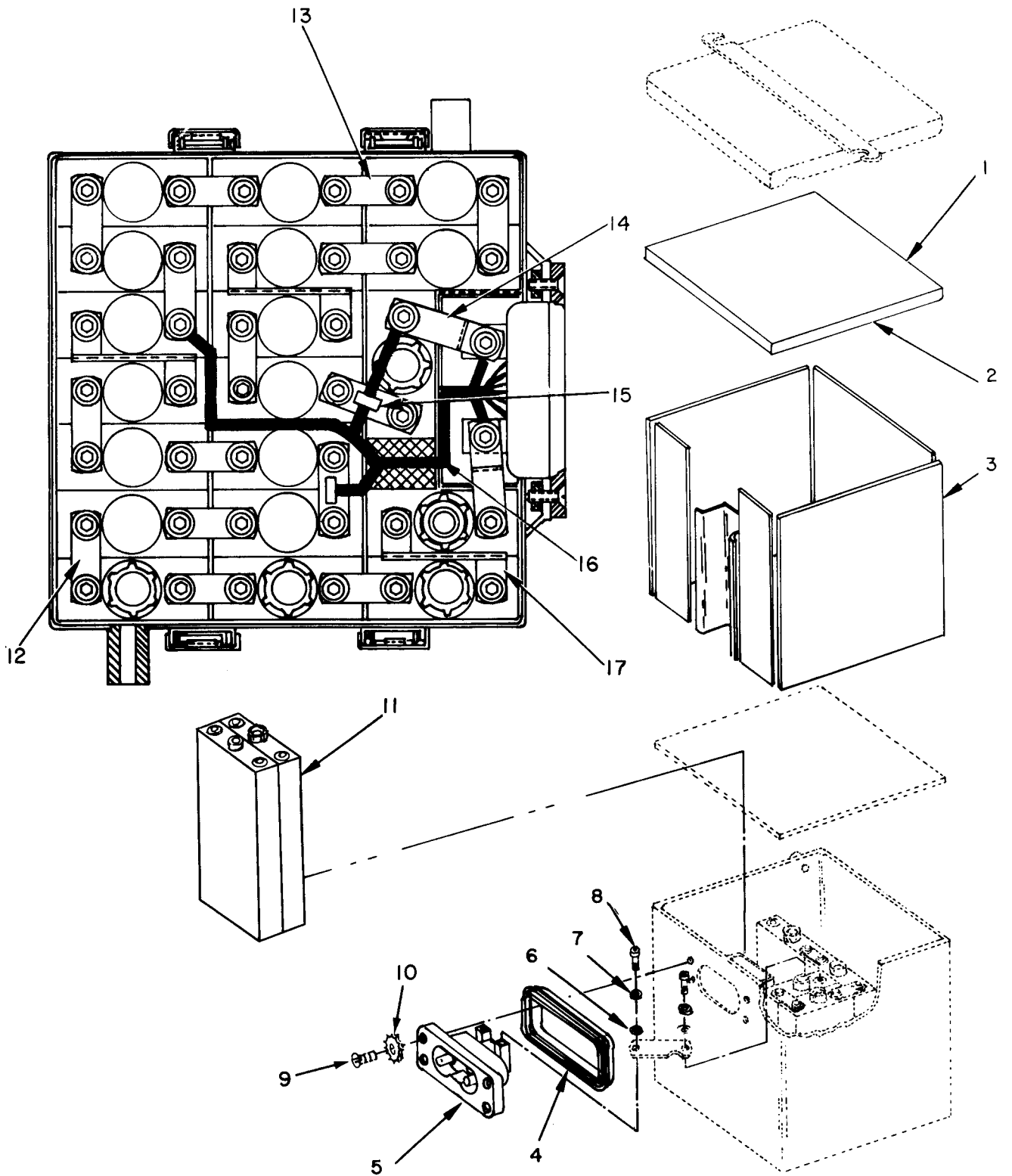
*b.* When National stock number or part number is known.

(1) *First.* Using the index of National Stock Numbers and Part Numbers, find the pertinent National stock number or part number. This index is in NIIN sequence followed by a list of part numbers in alphameric sequence, cross-referenced to the illustration figure number and item number.

(2) *Second.* After finding the figure and item number, locate the figure and item number in the repair parts list.

**6. Abbreviations**

Not applicable.

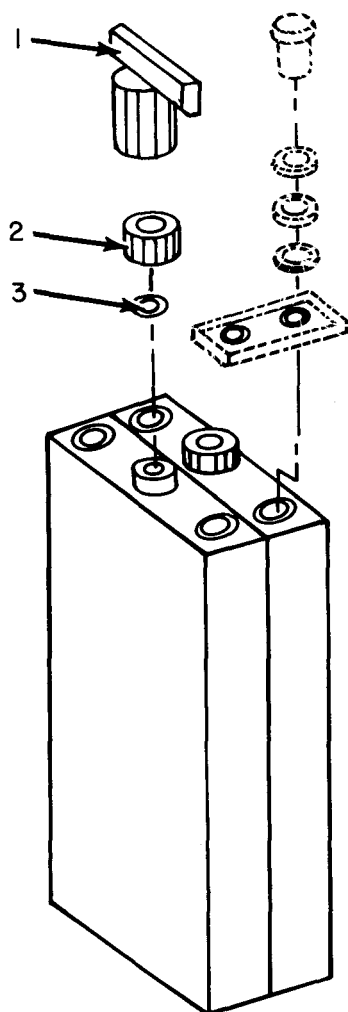


ELOYHOOI

Figure 1. Battery, Storage BB-432/A, BB-432A/A, and BB-432B/A.



(1) ILLUSTRATION		(2)	(3)	(4)	(5)	(6) DESCRIPTION	(7) USABLE ON CODE	(8) QTY INC UNIT
(a) FIG NO.	(b) ITEM NO.	SMP CODE	NATIONAL STOCK NUMBER	FSCM	PART NUMBER		U/M	
						GROUP 00 BATTERY, STORAGE BB-432/A, BA-432A/A AND BB-432B/A		
1	1	PAFZZ	5330-00-977-1023	24446	178A3325P21	GASKET . . . . .	CAZ, EYB, FMW	EA 1
1	2	XBFZZ		01002	162A7822	PAD COVER . . . . .	CAZ, EYB, FMW	EA 1
1	3	PAFZZ		80063	MI L-M-20693	PLASTIC SHEET . . . . .	CAZ, EYB, FMW	EA 1
1	4	PAFZZ	5330-00-205-0201	19209	162A8089-21	PACKING, PREFORMED . . . . .	CAZ, EYB, FMW	EA 1
1	5	PAFZZ	5935-00-198-3971	05593	N-200811	CONNECTOR, RECEPTAC . . . . .	CAZ, EYB, FMW	EA 1
1	6	PAFZZ	5310-00-950-5709	01002	162A7820-22	WASHER, SPRING TENSIL . . . . .	CAZ, EYB, FMW	EA 40
1	7	PAFZZ	5310-00-976-4621	01002	162A7819-22	WASHER, FLAT . . . . .	CAZ, EYB, FMW	EA 40
1	8	PAFZZ	5305-00-976-4622	01002	232A2124P23	SCREW, CAP, SOCKET . . . . .	CAZ, EYB, FMW	EA 40
1	9	PAFZZ	5305-00-958-5473	96906	MS35190-251	SCREW, MACHINE . . . . .	CAZ, EYB, FMW	EA 4
1	1	PAFZZ	5310-00-550-0286	96906	MS35336-15	WASHER, LOCK . . . . .	CAZ, EYB, FMW	EA 4
1	11	PAFZA	6140-01-072-3124	80058	BB-599A/A	BATTERY, STORAGE USE IN BB-432/A, BB-432A/A AND BB-432B/A	CAZ, EYB, FMW	EA 19
1	11	PAFZA	6140-00-110-3492	90634	17180	BATTERY, STORAGE USE IN BB-432/A . . . . .	CAZ	EA 19
1	11	PAFZA	6140-00-204-2737	74025	27420	BATTERY, STORAGE USE IN BB-432/A . . . . .	CAZ	EA 19
1	12	PAFZZ	5940-00-950-9324	01002	178A3227P22	LINK, BATTERY TERMIN QUANTITY FOR BB-432B/A IS 6 . . . . .	CAZ, EYB, FMW	EA 7
1	13	PAFZZ	5940-00-950-9325	01002	178A3227P23	LINK, BATTERY TERMIN . . . . .	CAZ, EYB, FMW	EA 7
1	14	PAFZZ	5940-00-950-9330	01002	178A3227P25	LINK, BATTERY TERMIN . . . . .	CAZ, EYB, FMW	EA 2
1	15	PAFZZ	5940-00-950-9329	01002	178A3227P24	LINK, BATTERY TERMIN . . . . .	CAZ, EYB, FMW	EA 1
1	16	PAFZZ	6140-01-143-9075	74025	29817-001	SENSOR ASSEMBLY . . . . .	EYB	EA 1
1	17	PAFZZ	6150-00-168-1293	96906	MS27308-1	BUS, CONDUCTOR . . . . .	CAZ, EYB, FMW	EA 3



ELOYH002

Figure 2. Battery, Storage Cell BB-599/A, PN 5519766, PN 27420, BB-600/A, BB-660A/A PN 43B022AC02, PN x-16962-4, BB-475/A, BB-652/A, BB-652A/A, BB-648/A, BB-648A/A, and PN 26349-8.

SECTION II

TM 11-6140-203-30P-2

(1) ILLUSTRATION		(2)	(3)	(4)	(5)	(6)	(7)	(8)
FIG NO.	ITEM NO.	SMR CODE	NATIONAL STOCK NUMBER	FSCM	PART NUMBER	DESCRIPTION	USABLE ON CODE	QTY TYP UNIT
						GROUP 01 BATTERY, STORAGE CELL PN BB-599/A, BB-599A/A, PN 17180, PN 27420, BB-600/A, PN 18191-15, PN 43B022AC02, PN X16962-4, BB-475/A, BB-652/A, BB-652A/A, BB-648/A, BB-648A/A, AND PN 26349-8		
2	1	PAFZZ	5120-00-618-5305	34122	16979	WRENCH, BATTERY FILL . . . . .	CAZ, EYB, FMM	EA 1
2	2	PAFZZ	6140-00-676-3376	74025	16934-001	FILLER CAP, BATTERY . . . . .	CAZ, EYB, FMM	EA 19
2	3	PAFZZ	5330-00-731-7366	74025	10343-005	PACKING, PREFORMED . . . . .	CAZ, EYB, FMM	EA 19
7								

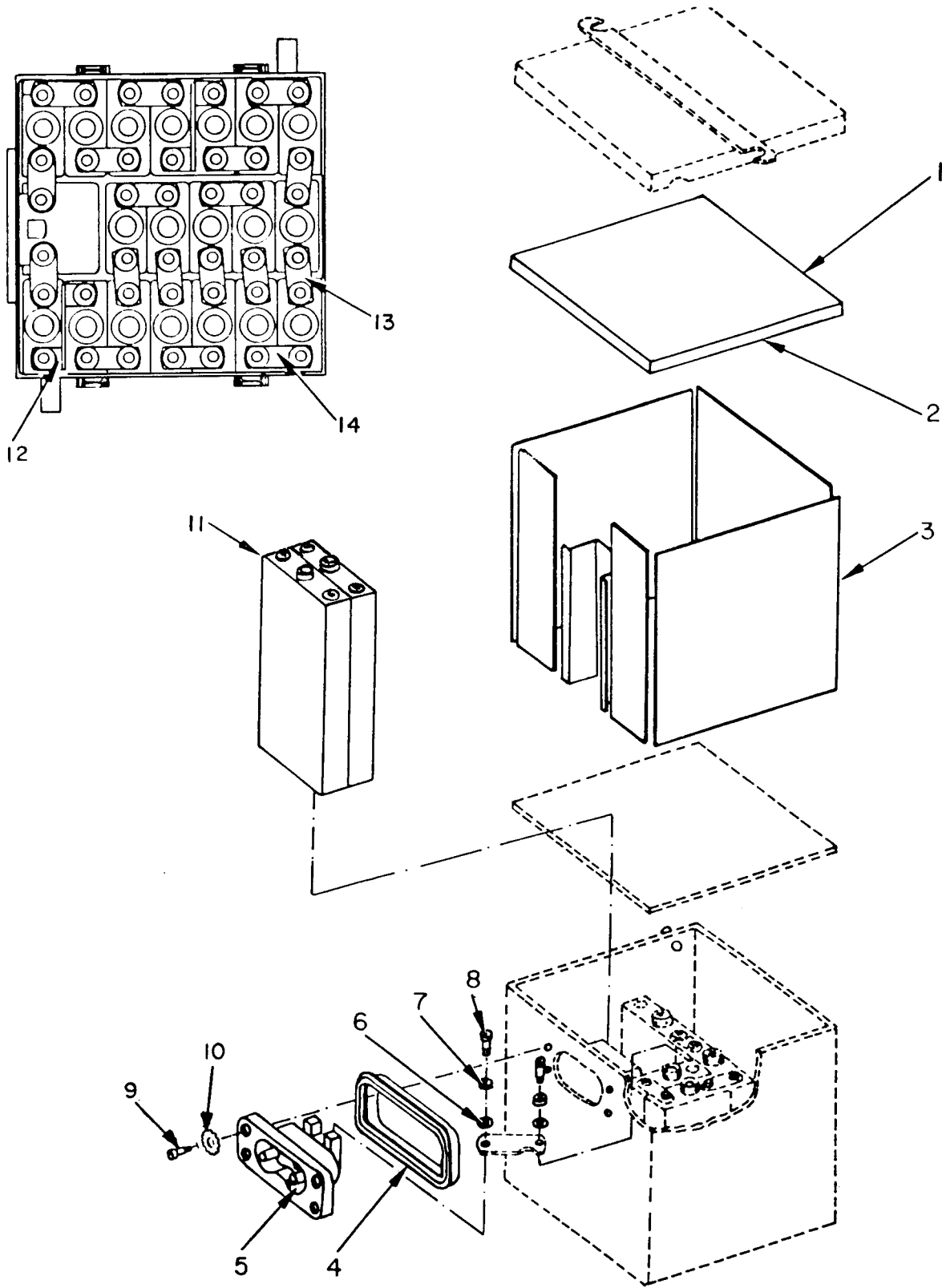
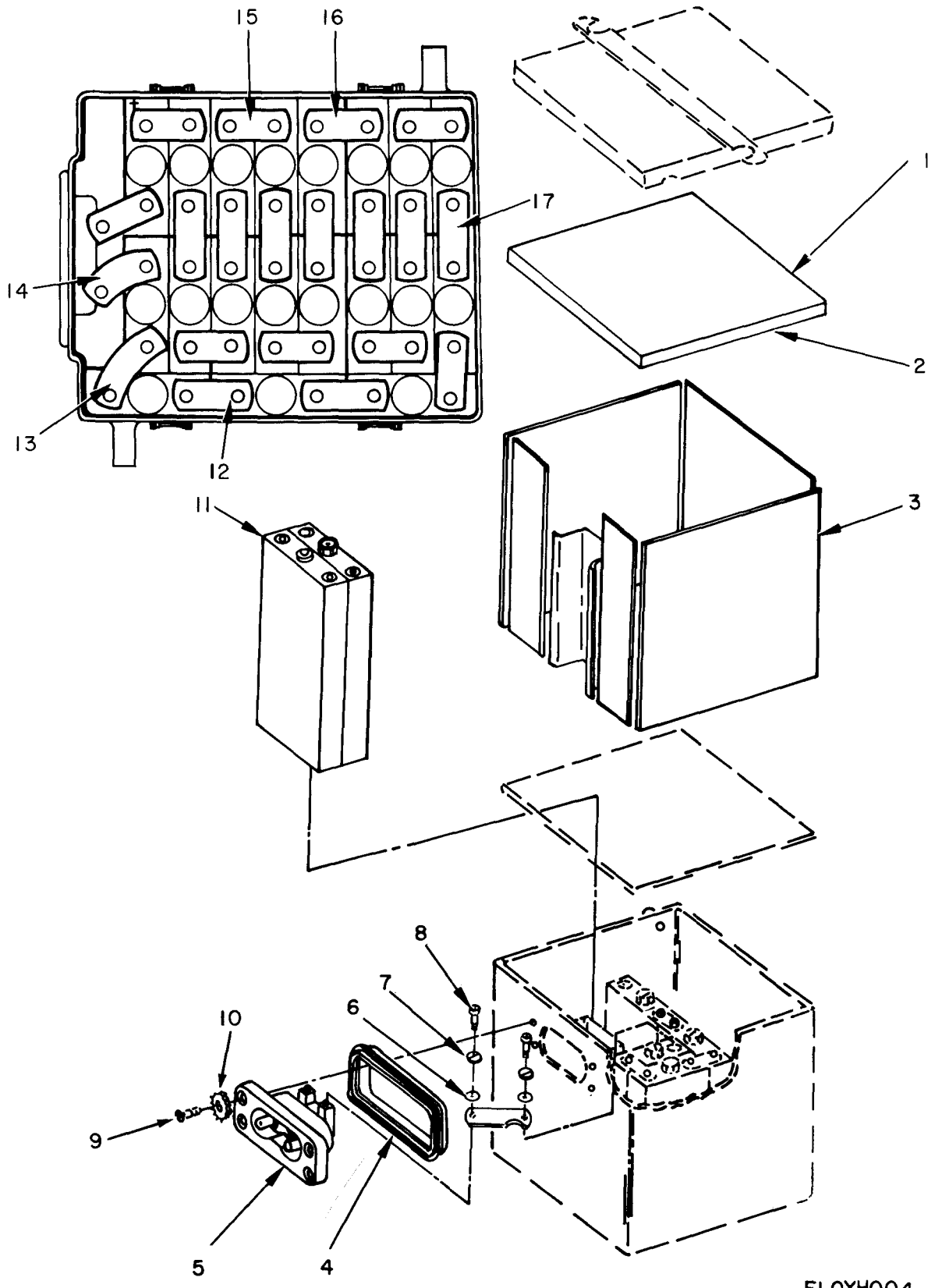


Figure 3. Battery,Storage BB-433/A and BB-433A/A.

## SECTION 11

TM 11-6140-203-30P-2

(1) ILLUSTRATION		(2)	(3)	(4)	(5)	(6)	(7)	(8)
(a) FIG NO.	(b) ITEM NO.	SMB CODE	NATIONAL STOCK NUMBER	FSCM	PART NUMBER	DESCRIPTION  USABLE ON CODE	U/M	QTY INC UNIT
						GROUP 00 BATTERY, STORAGE BB-433/A AND BB-433A/A		
3	1	XBFZZ	5330-00-718-6249	74025	23573-2	SEAL, RUBBER STRIP . . . . .	.3FA, EBX	EA 1
3	1	PAFZZ		80063	SCL6853/3-4	PAD, COVER . . . . .	.3FA, EBX	EA 1
3	1	PAFZZ		80063	MI L-M-20693	PLASTIC SHEET . . . . .	.3FA, EBX	EA 1
3	4	PAFZZ	5330-00-205-0201	19209	162A8089-21	PACKING, PREFORMED . . . . .	.3FA, EBX	EA 1
3	5	PAFZZ	5935-00-673-3621	74025	16163-7	CONNECTOR, RECEPTACLE . . . . .	.3FA, EBX	EA 1
3	1	PAFZZ	5310-00-837-6117	74025	16128-1	WASHER, SPRING TENSILE . . . . .	.3FA, EBX	EA 40
3	7	PAFZZ	5310-00-739-4470	74025	23591-1	WASHER, FLAT . . . . .	.3FA, EBX	EA 40
3	1	PAFZZ	5305-00-983-6651	96906	MS16998-27	SCREW, CAP, SOCKET HEAD . . . . .	.3FA, EBX	EA 40
3	09	PAFZZ	5305-00-958-5473	96906	MS35190-251	SCREW, MACHINE . . . . .	.3FA, EBX	EA 4
3	10	PAFZZ	5310-00-550-0286	96906	MS35336-15	WASHER, LOCK . . . . .	.3FA, EBX	EA 4
3	11	PAFZA	6140-00-881-6887	80058	BB-600/A	BATTERY, STORAGE CELL USE IN BB-433/A . . . . .	.3FA	EA 19
3	11	PAFZA	6140-00-881-6887	74025	18191-15	BATTERY, STORAGE CELL USE IN BB-433/A AND BB-433A/A . . . . .	.3FA 3EA EBX	EA 19
3	12	XBFZZ		80063	SCL6853/2-3	LINK, BATTERY TERMINAL . . . . .	.3FA, EBX	EA 2
3	13	PAFZZ	5940-00-841-6626	74025	X16102-7	BUS, CONDUCTOR . . . . .	.3FA, EBX	EA 6
3	14	PAFZZ	5940-00-841-6629	74025	X16102-6	BUS, CONDUCTOR . . . . .	.3FA, EBX	EA 12



ELOYH004

Figure 4. Battery, storage BB-434/A.

## SECTION II

TM 11-6140-203-30P-2

(1) ILLUSTRATION		(2)	(3)	(4)	(5)	(6)	(7)	(8)
FIG. NO.	ITEM NO.	SWR CODE	NATIONAL STOCK NUMBER	FSCM	PART NUMBER	DESCRIPTION	USABLE ON CODE	QTY TYP UNIT
						GROUP 00 BATTERY, STORAGE BB-434/A		
4	1	PAFZZ	5330-00-735-6454	74025	23573-1	GASKET, COVER . . . . .	3E9	EA 1
4	2	XBFZZ		74025	23462	PAD, COVER . . . . .	3E9	EA 1
4	3	PAFZZ	9330-00-877-2872	81349	MI LM20693	PLASTIC SHEE . . . . .	3E9	EA 1
4	4	PAFZZ	5330-00-205-0201	19209	162A8089-21	GASKET, CONNECTO . . . . .	3E9	EA 1
4	5	PAFZZ	5935-00-673-3621	74025	16163-7	CONNECTO . . . . .	3E9	EA 1
4	6	PAFZZ	5310-00-837-6117	74025	16128-1	WASHER, SPRING . . . . .	3E9	EA 40
4	7	PAFZZ	5310-00-739-4470	74025	23591-1	WASHER, FLAT . . . . .	3E9	EA 40
4	8	PAFZZ	5305-00-983-6651	96906	MS16998-27	SCREW, CAP, SOCKET HE . . . . .	3E9	EA 40
4	9	PAFZZ	5305-00-958-5473	96906	MS35190-251	SCREW, MACHINE . . . . .	3E9	EA 4
4	10	PAFZZ	5310-00-550-0286	96906	MS35336-15	WASHER, LOCK . . . . .	3E9	EA 4
4	11	XBFZA	6140-00-204-2739	19209	43B022AC02	BATTERY, STORAGE OR . . . . .	3E9	EA 19
4	11	PAFZA	6140-00-676-9024	74025	X16962-4	BATTERY, STORAGE . . . . .	3E9	EA 19
4	12	PAFZZ	5940-00-845-4925	74025	X16102-53	LINK, BATTERY . . . . .	3E9	EA 1
4	13	PAFZZ	5940-00-845-4931	74025	18006-1	LINK, BATTERY . . . . .	3E9	EA 1
4	14	PAFZZ	5940-00-845-4927	74025	30500-002	LINK, BATTERY . . . . .	3E9	EA 1
4	15	PAFZZ	5940-00-681-2898	74025	X16102-52	LINK, BATTERY . . . . .	3E9	EA 6
4	16	PAFZZ	5940-00-841-6626	74025	X16102-56	BUS, CONDUCTOR . . . . .	3E9	EA 3
4	17	PAFZZ	5940-00-841-6629	74025	X16102-6	BUS, CONDUCTOR . . . . .	3E9	EA 8

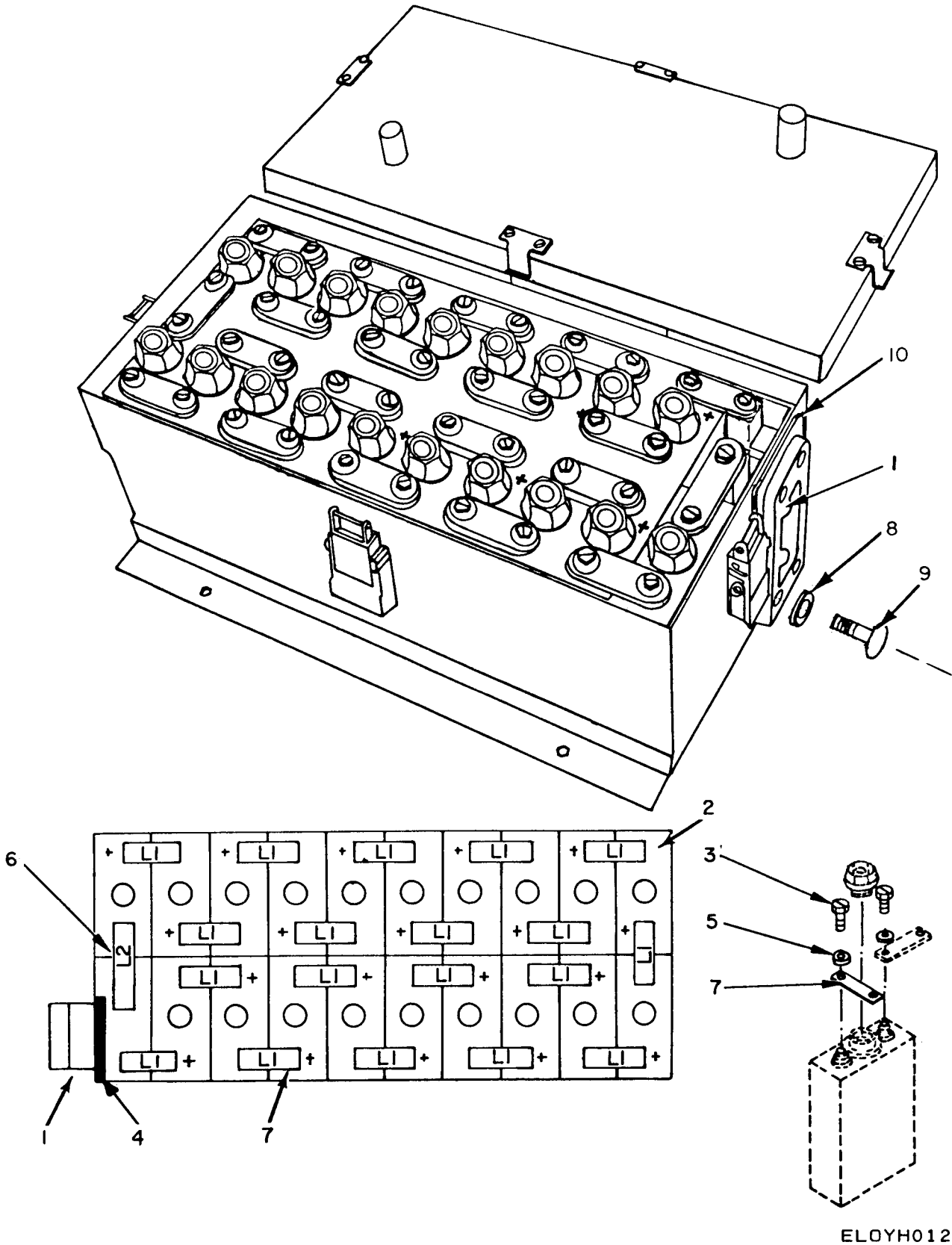


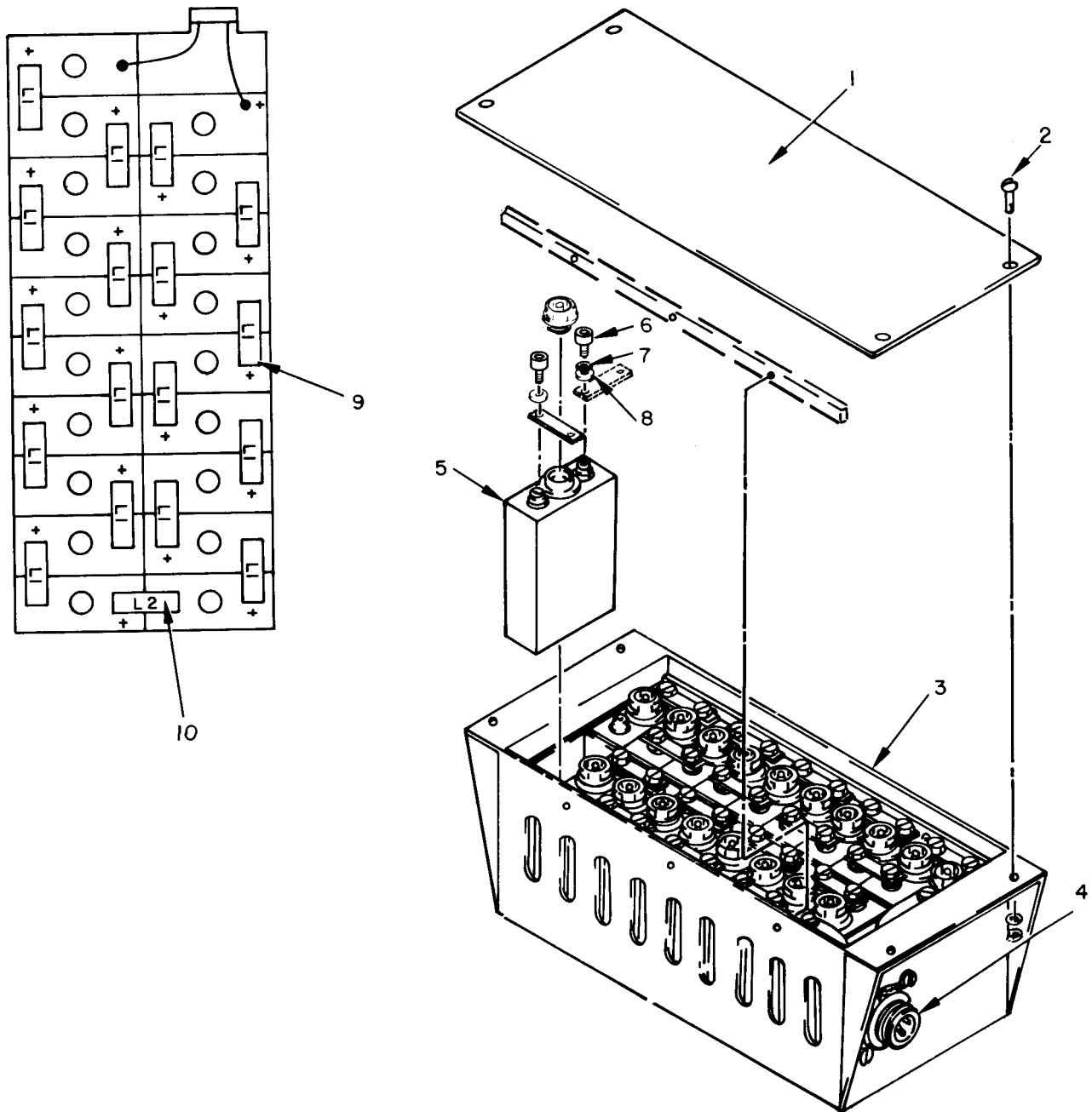
Figure 5. Battery, Storage BB-476/A.



## SECTION II

TM 11-6140-203-30P-2

(1) ILLUSTRATION		(2)	(3)	(4)	(5)	(6) DESCRIPTION	(7)	(8)
(a) FIG NO.	(b) ITEM NO.	SMR CODE	NATIONAL STOCK NUMBER	FSCM	PART NUMBER	USABLE ON CODE	U/M	QTY INC UNIT
5	1	PAFZZ	5935-00-114-4247	74025	2900	GROUP 00 BATTERY, STORAGE BB-476/A		
5	2	PAFZA	6140-01-073-3206	80058	BB-475/A	CONNECTO . . . . . DW9	EA	1
5	3	PAFZZ	5305-00-976-4622	01002	232A2124P23	BATTERY, STORAGE . . . . . DW9	EA	19
5	4	PAFZZ		80063	MI L-M-20693	SCREW, CAP, SOCKET . . . . . DW9	EA	40
5	5	PAFZZ		01002	162A7820-22	PLASTIC SHEET CUT TO SIZE . . . . . DW9	EA	1
5	6	PAFZZ	5310-00-950-5709	74025	10371-140	WASHER, SPRING . . . . . DW9	EA	40
5	7	PAFZZ	5940-00-363-8406	90634	B551-11873-1	LINK, BATTERY TERMIN . . . . . DW9	EA	1
5	8	PAFZZ	5310-00-550-0286	96906	MS35336-15	LINK, BATTERY TERMIN . . . . . DW9	EA	17
5	9	PAFZZ	5305-00-958-5473	96906	MS35190-251	WASHER, LOCK . . . . . DW9	EA	4
5	10	PAFZZ	5330-01-149-7245	74025	28272-001	SCREW, MACHINE . . . . . DW9	EA	4
						GASKET, CONNECTOR . . . . . DW9	EA	1



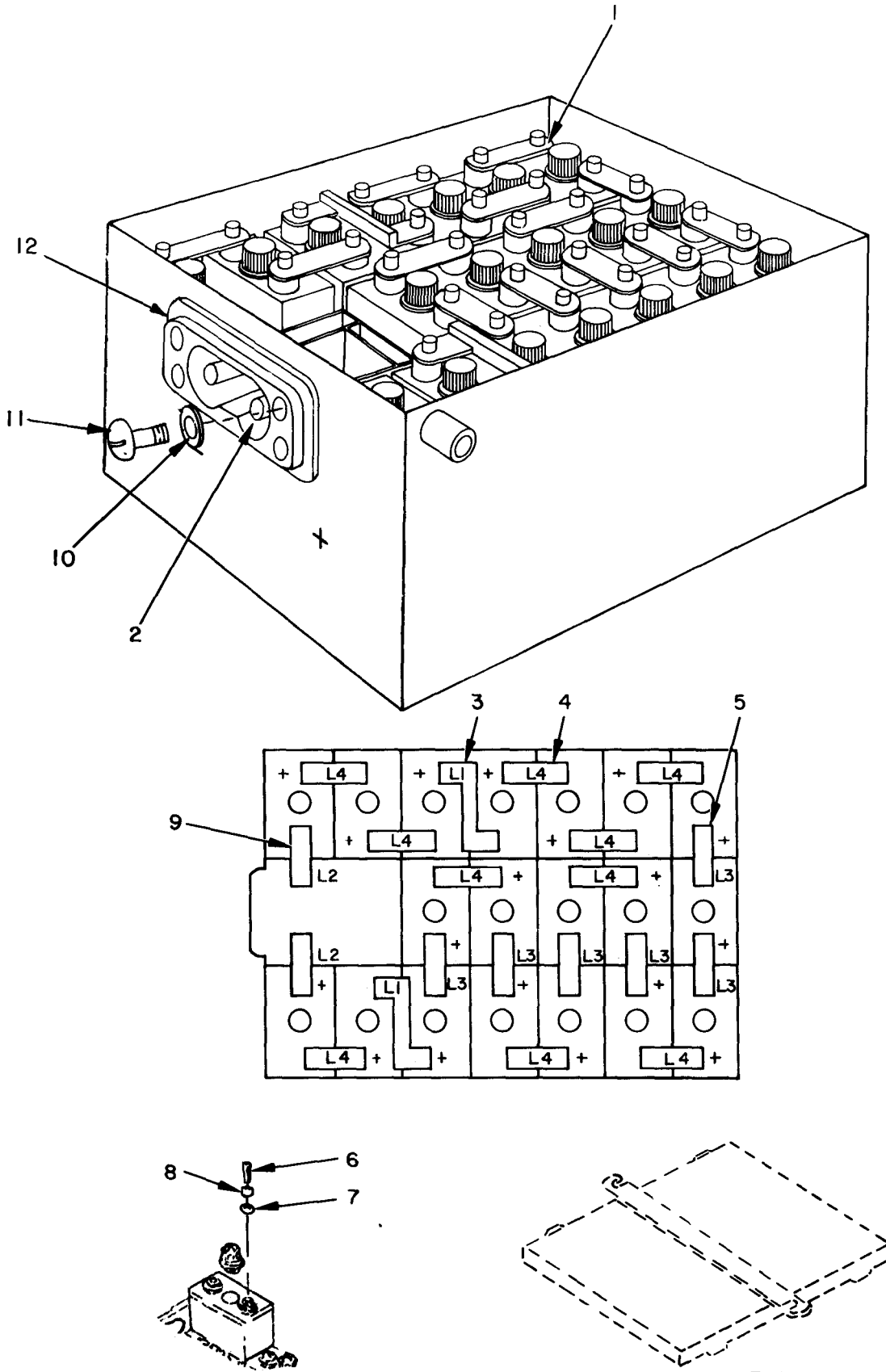
ELOYH005

Figure 6. Battery, Storage BB-641/A.

## SECTION II

TM 11-6140-203-30P-2

(1) ILLUSTRATION		(2)	(3)	(4)	(5)	(6)	(7)	(8)
FIG NO.	ITEM NO.	SMP CODE	NATIONAL STOCK NUMBER	FSCM	PART NUMBER	DESCRIPTION  USABLE ON CODE	U/M	QTY INC UNIT
						GROUP 00 BATTERY, STORAGE BB-641/A		
6	1	PAFZZ	6140-00-878-9144	90634	C551-11931	COVER, BATTERY BOX . . . . .	AJS EA	1
6	2	PAFZZ	5305-00-054-6669	96906	MS51957-44	SCREW, MACHINE . . . . .	AJS EA	4
6	3	PAFZZ	6140-00-878-9143	90634	D9762	BATTERY BOX . . . . .	AJS EA	1
6	4	PAFZZ	5935-00-687-1365	77820	10-87324-9S	CONNECTOR, RECEPTACLE . . . . .	AJS EA	1
6	5	PAFZA	6140-00-933-4286	80058	BB-652/A	BATTERY, STORAGE . . . . .	AJS EA	19
6	6	PAFZZ	5305-00-976-4622	01002	232A2124P23	SCREW, CAP, SOCKET HEAD . . . . .	AJS EA	38
6	7	PAFZZ	5310-00-976-4621	01002	162A7819-22	WASHER, FLAT . . . . .	AJS EA	38
6	8	PAFZZ	5310-00-950-5709	19209	162A7820P22	WASHER, SPRING TENSILE . . . . .	AJS EA	38
6	9	PAFZZ	5940-00-933-4336	90634	B551-11873-1	LINK, BATTERY TERMINAL . . . . .	AJS EA	17
6	10	PAFZZ	5340-00-178-1542	90634	B551-11873-2	LINK, BATTERY . . . . .	AJS EA	1



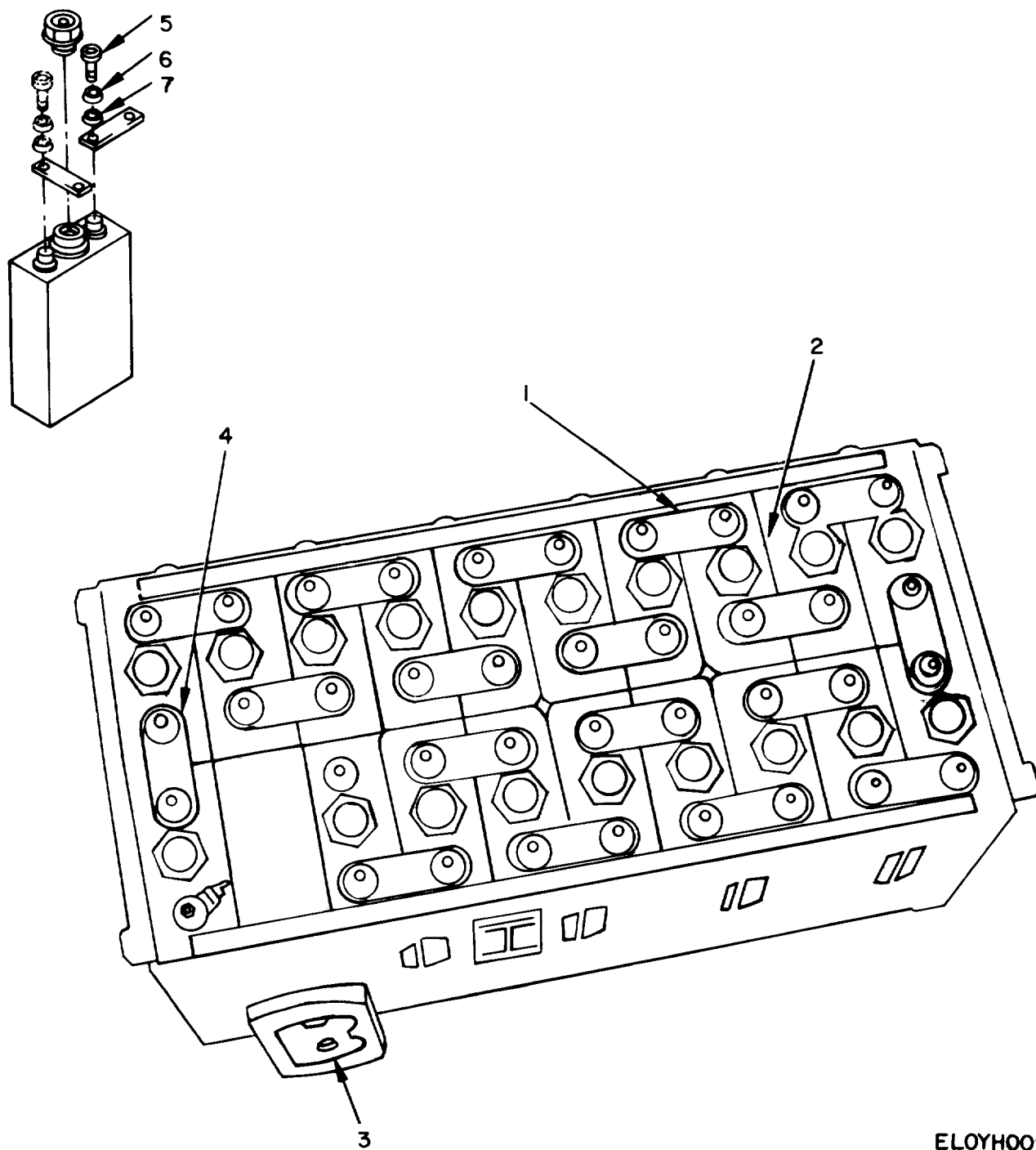
ELOYH006

Figure 7. Battery, storage BB-649/A and BB649A/A.

SECTION II

TM 11-6140-203-30P-2

(1) ILLUSTRATION		(2)	(3)	(4)	(5)	(6)	(7)	(8)
(a) FIG NO.	(b) ITEM NO.	SMP CODE	NATIONAL STOCK NUMBER	FSCM	PART NUMBER	DESCRIPTION	USABLE ON CODE	QTY INC UNIT
						GROUP 00 BATTERY, STORAGE BB-649/A AND BB-649A/A		
7	1	PAFZA	6140-00-931-4758	74025	BB-648/A	BATTERY, STORAGE USE ONLY IN BB-649/A . . . . .	4HS	EA 19
7	1	PAFZA	6140-01-071-8560	80058	BB-648A/A	BATTERY, STORAGE USE IN BB-649A/A . . . . .	4HS, EBY	EA 19
7	2	PAFZZ	5935-00-673-3621	74025	16163-7	CONNECTO . . . . .	4HS, EBY	EA 1
7	3	PAFZZ	5940-00-933-8484	74025	15089-3	LINK, BATTERY . . . . .	4HS, EBY	EA 2
7	4	PAFZZ	5940-00-933-8483	74025	16102-10	LINK, BATTERY . . . . .	4HS, EBY	EA 10
7	5	PAFZZ	5940-00-933-8482	74025	16102-18	LINK, BATTERY . . . . .	4HS, EBY	EA 6
7	6	PAFZZ	5306-00-156-2336	88044	AN3C3A	SCREW CAP, HEXAGON . . . . .	4HS, EBY	EA 40
7	7	PAFZZ	5310-00-837-6117	74025	16128-1	WASHER, SPRING . . . . .	4HS, EBY	EA 40
7	8	PAFZZ	5310-00-739-4470	74025	23591-1	WASHER, FLAT. . . . .	4HS, EBY	EA 40
7	9	PAFZZ	5940-00-933-8481	74025	16102-83	LINK, BATTERY . . . . .	4HS, EBY	EA 2
7	10	PAFZZ	5310-00-550-0286	96906	MS35336-15	WASHER, LOCK. . . . .	4HS, EBY	EA 4
7	11	PAFZZ	5305-00-958-5473	96906	MS35190-251	SCREW, MACHINE. . . . .	4HS, EBY	EA 4
7	12	PAFZZ	5330-00-205-0201	19209	162A8089-21	PACKING, PREFORMED. . . . .	4HS, EBY	EA 1



ELOYH009

Figure 8. Battery, Storage BB-667/A

SECTION II

TM 11-6140-203-30P-2

(1) ILLUSTRATION		(2) SMR CODE	(3) NATIONAL STOCK NUMBER	(4) FSCM	(5) PART NUMBER	(6) DESCRIPTION	(7) U/M	(8) QTY. IN UNIT
(a) FIG. NO.	(b) FIG. NO.					USABLE ON CODE		
						GROUP 00 BATTERY, STORAGE BB-667/A		
8	1	PAFZZ	5940-00-933-4336	90634	B551-11873-1	LINK, BATTERY TERMIN . . . . .	4HT	EA 16
8	2	PAFZA	6140-00-933-4286	80058	BB-652/A	BATTERY, STORAGE . . . . .	4HT	EA 19
8	3	PAFZZ	5935-00-671-8347	97151	7545314-10	CONNECTOR, RECEPTACL . . . . .	4HT	EA 1
8	4	PAFZZ	5340-00-178-1542	90634	B551-11873-2	LINK, BATTERY . . . . .	4HT	EA 2
8	5	PAFZZ	5305-00-976-4622	01002	232A2124P23	SCREW, CAP, SOCKET H . . . . .	4HT	EA 40
8	6	PAFZZ	5310-00-976-4621	01002	162A7819-22	WASHER, FLAT . . . . .	4HT	EA 40
8	7	PAFZZ	5310-00-950-5709	19209	162A7820P22	WASHER, SPRING TENSI . . . . .	4HT	EA 40

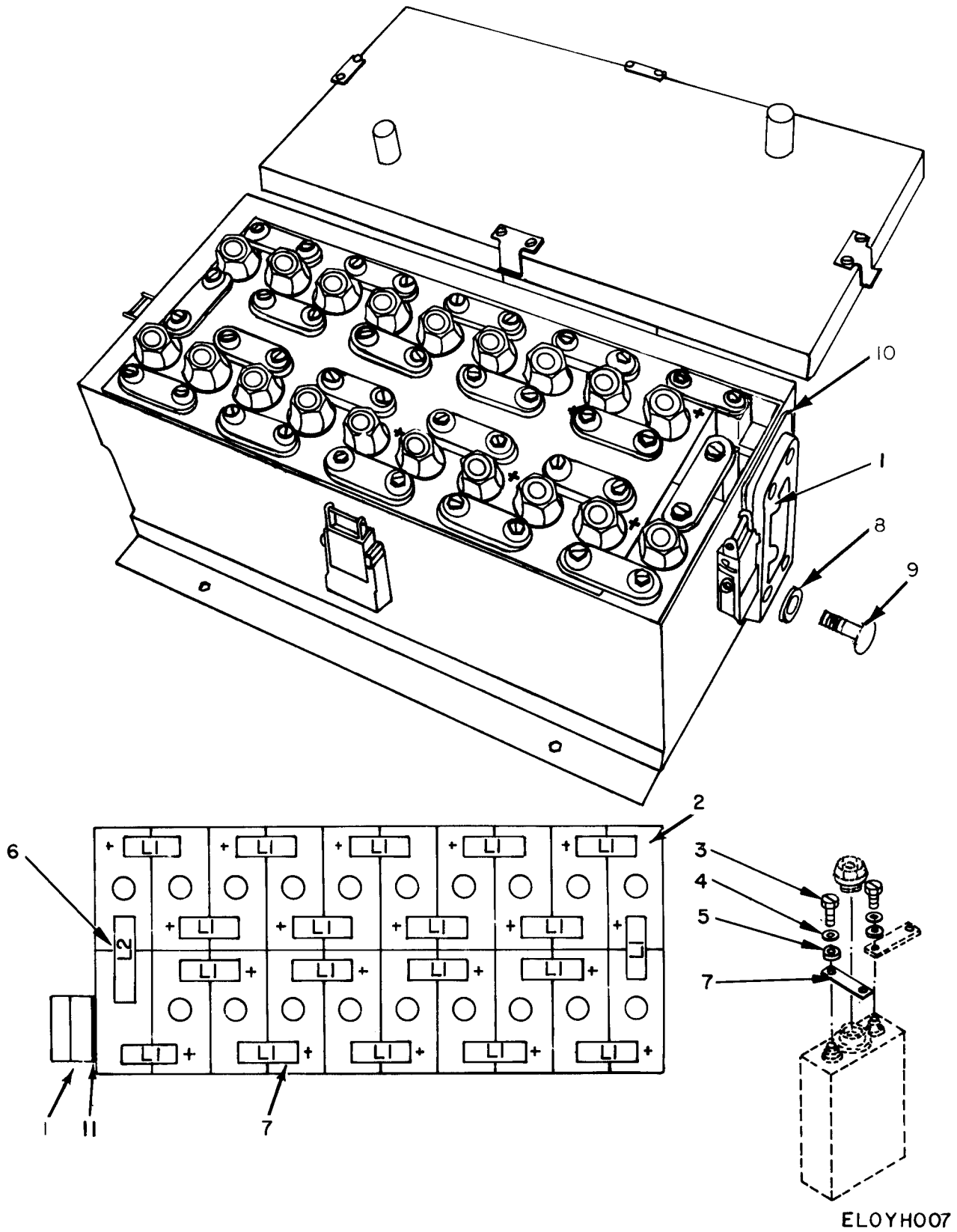


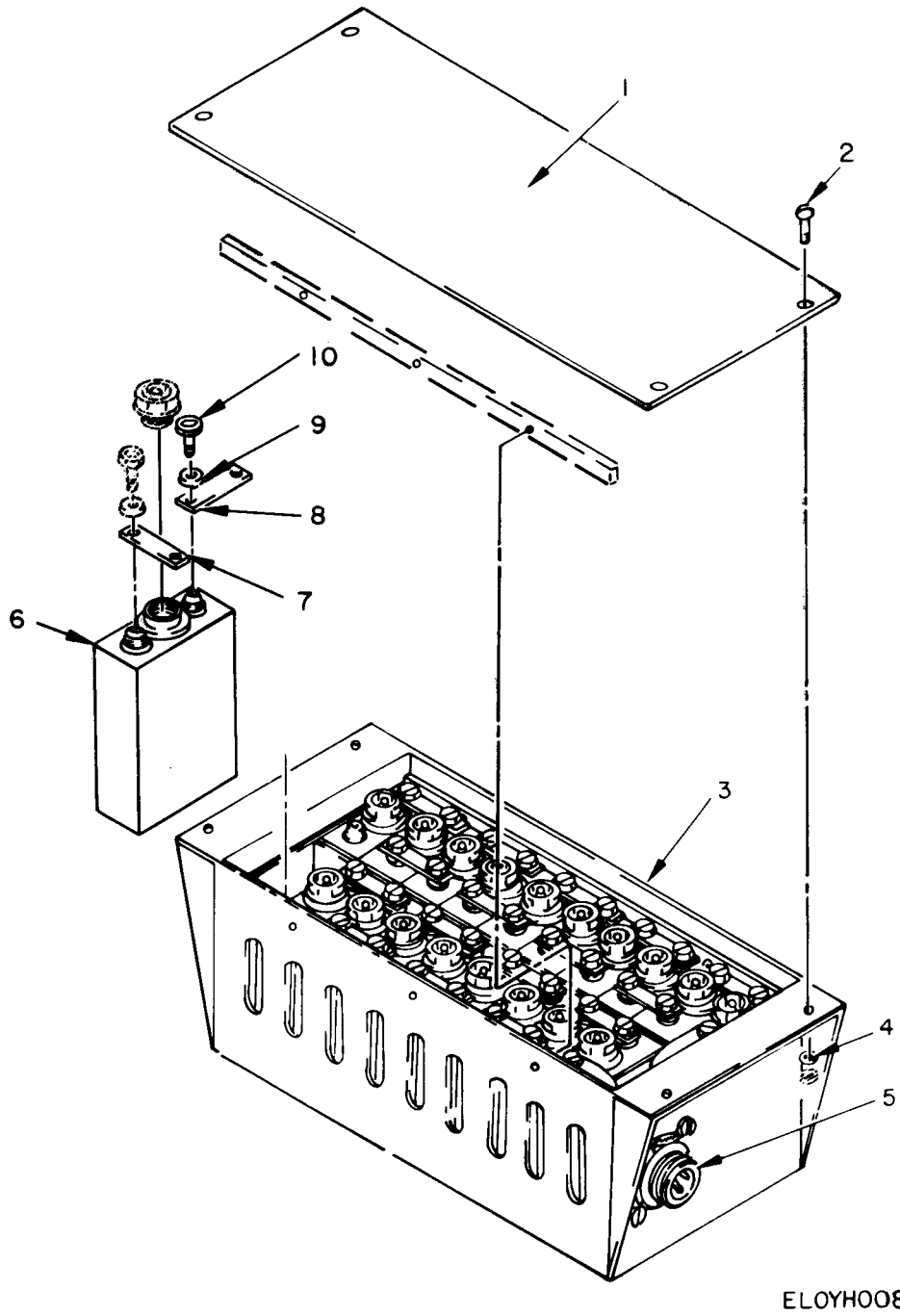
Figure 9. Battery, Storage BB-676/A.



SECTION 11

TM 11-6140-203-30P-2

(1) ILLUSTRATION		(2)	(3)	(4)	(5)	(6) DESCRIPTION	(7)	(8)
(a) FIG NO.	(b) ITEM NO.	SMP CODE	NATIONAL STOCK NUMBER	FSCM	PART NUMBER	USABLE ON CODE	U/M	QTY IN UNIT
						GROUP 00 BATTERY, STORAGE BB-676/A		
9	1	PAFZZ	5935-00-114-4247	74025	2900	CONNECTO . . . . .	B35	EA 1
9	2	PAFZA	6140-00-933-4286	80058	BB-652/A	BATTERY, STORAGE . . . . .	B35	EA 19
9	3	PAFZZ	5305-00-976-4622	01002	232A2124P23	SCREW, CAP, SOCKET . . . . .	B35	EA 40
9	4	PAFZZ	5310-00-976-4621	24446	162A7819-22	WASHER, FLAT . . . . .	B35	EA 40
9	5	PAFZZ	5310-00-950-5709	01002	162A7820-22	WASHER, SPRING . . . . .	B35	EA 40
9	6	PAFZZ	5940-00-363-8406	74025	10371-140	LI NK, BATTERY . . . . .	B35	EA 1
9	7	PAFZZ	5940-00-933-4336	90634	B551-11873-1	LI NK, BATTERY . . . . .	B35	EA 17
9	8	PAFZZ	5310-00-550-0286	96906	MS35336-15	WASHER, LOCK . . . . .	B35	EA 4
9	9	PAFZZ	5305-00-958-5473	96906	MS35190-251	SCREW, MACHI NE . . . . .	B35	EA 4
9	10	PAFZZ	5330-00-205-0201	19209	162A8089-21	PACKI NG, PREFORMED . . . . .	B35	EA 1
9	11	PAFZZ		80063	MI L-M-20693	PLASTIC SHEET CUT TO SIZE . . . . .	B35	EA 1



ELOYH008

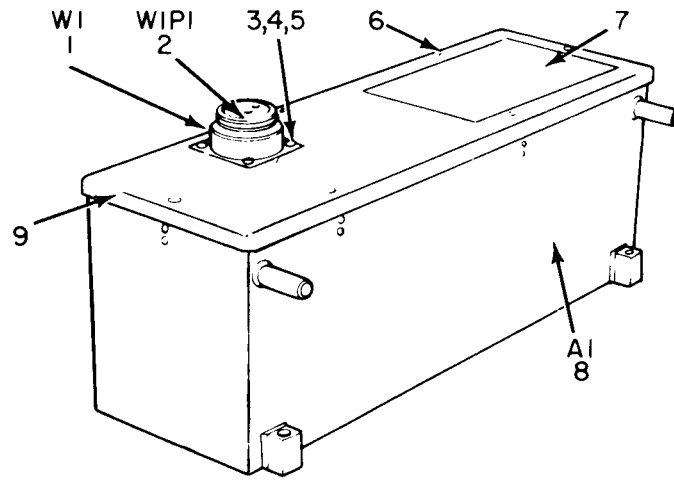
Figure 10. Battery, Storage BB-678/A, BB-678A/A.

## SECTION 11

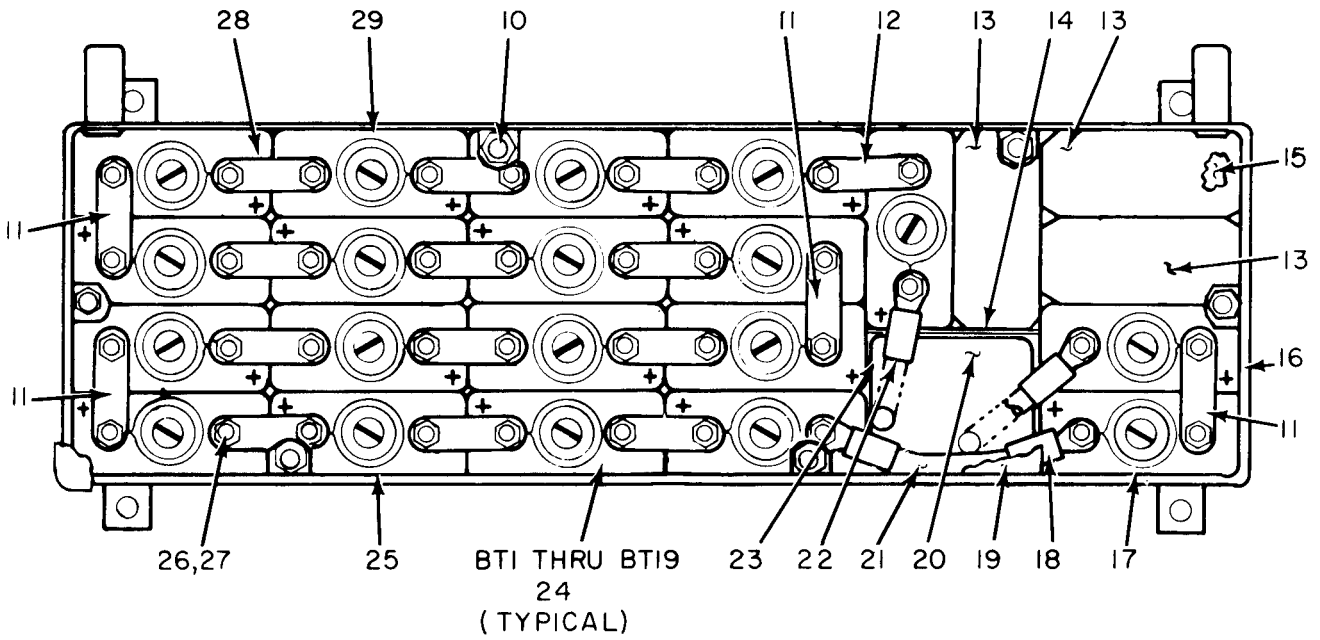
TM 11-6140-203-30P-2

(1) ILLUSTRATION		(2)	(3)	(4)	(5)	(6) DESCRIPTION	(7) USABLE ON CODE	(8) QTY U/M UNIT
(a) FIG NO.	(b) ITEM NO.	SUR CODE	NATIONAL STOCK NUMBER	FSCM	PART NUMBER			
						GROUP 00 BATTERY, STORAGE BB-678/A AND BB-678A/A		
10	1	PAFZZ	6140-00-878-9144	90634	C551-11931	COVER, BATTERY BOX . . . . .	4HU, FFA	EA 1
10	2	PAFZZ	5305-00-054-6669	96906	MS51957-44	SCREW, MACHINE . . . . .	4HU, FFA	EA 4
10	3	PAFZZ	6140-00-878-9143	09052	D9762	BATTERY, BOX . . . . .	4HU, FFA	EA 1
10	4	PAFZZ	5310-00-976-4621	24446	162A7819-22	WASHER, FLAT . . . . .	4HU, FFA	EA 4
10	5	PAFZZ	5935-00-435-1779	90634	B551-92554	CONNECTOR, RECEPTAC . . . . .	4HU, FFA	EA 1
10	6	PAFZA	6140-00-933-4286	80058	BB-652/A	BATTERY, STORAGE USE ONLY IN BB-678/A . . . . .	4HU	EA 19
10	6	PAFZA	6140-01-150-5380	80058	BB-652A/A	BATTERY, STORAGE CELL USE IN BB-678/A AND BB-678A/A . . . . .	4HU FFA	EA 19
10	7	PAFZZ	5940-00-933-4336	90634	B551-11873-1	LINK, BATTERY . . . . .	4HU, FFA	EA 17
10	8	PAFZZ	5340-00-178-1542	90634	B551-11873-2	LINK, BATTERY . . . . .	4HU, FFA	EA 2
10	9	PAFZZ	5310-00-950-5709	19209	162A7820P22	WASHER, SPRING TENS . . . . .	4HU, FFA	EA 38
10	10	PAFZZ	5305-00-976-4622	01002	232A2124P23	SCREW, CAP, SOCKET . . . . .	4HU, FFA	EA 38
						23/(24 blank)		





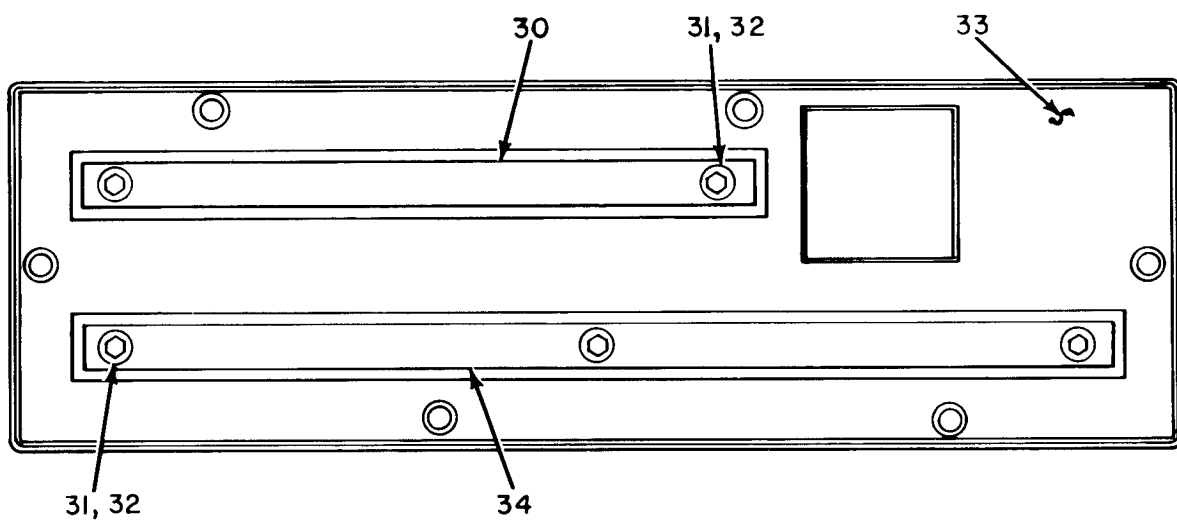
MAJOR ASSEMBLIES



TOP VIEW

ELOYHOIO

Figure 11. Battery, Storage BB-708/U (Sheet 1 of 2).



UNDERSIDE OF COVER

ELOYH011

Figure 11. Battery, Storage BB-708/U (Sheet 2 of 2).

## SECTION II

TM 11-6140-203-30P-2

(1) ILLUSTRATION		(2)	(3)	(4)	(5)	(6)	(7)	(8)
(a) FIG NO.	(b) ITEM NO.	SMP CODE	NATIONAL STOCK NUMBER	FSCM	PART NUMBER	DESCRIPTION	USABLE ON CODE	QTY INC UNIT
						GROUP 00 BATTERY, STORAGE BB-708/U		
11	1	PAFZZ		74025	29255-1	HARNES ASSEMBLY . . . . .	DOE	EA 1
11	2	PAFZZ		71468	CA02AQ20-8S	CONNECTOR, PLUG ELEC . . . . .	DOE	EA 1
11	3	PAFZZ	5305-00-841-2942	80205	NAS600-8P	SCREW MACHINE . . . . .	DOE	EA 4
11	4	PAFZZ	5310-00-058-3599	96906	MS35335-57	WASHER, LOCK . . . . .	DOE	EA 4
11	5	PAFZZ	5310-00-982-5000	96906	MS21045C04	NUT, SELF-LOCKING, HE. . . . .	DOE	EA 4
11	6	PAFZZ	5305-00-680-6391	80205	NAS1403-2	SCREW MACHINE . . . . .	DOE	EA 6
11	7	XBFZZ		05395	AV111054-1	PLATE, INSTRUCTION . . . . .	DOE	EA 1
11	8	XBFZZ		74025	29153	BOX ASSEMBLY . . . . .	DOE	EA 1
11	9	XBFZZ		74025	29644	COVER . . . . .	DOE	EA 1
11	10	PAFZZ		05395	S10009C3	NUT PLATE, RIGHT . . . . .	DOE	EA 6
11	11	PAFZZ		74025	16102-127	STRAP, INTERCELL . . . . .	DOE	EA 4
11	12	PAFZZ	6150-01-152-8915	74025	16102-134	BUS, CONDUCTOR . . . . .	DOE	EA 1
11	13	XBFZZ		74025	29154-8	FILLER . . . . .	DOE	EA 3
11	14	XBFZZ		74025	29154-7	INSERT . . . . .	DOE	EA 1
11	15	XBFZZ		74025	29154-1	PAD, BOTTOM . . . . .	DOE	EA 1
11	16	XBFZZ		74025	29154-6	INSERT . . . . .	DOE	EA 2
11	17	XBFZZ		74025	29154-4	INSERT . . . . .	DOE	EA 1
11	18	PAFZZ	5940-00-143-5284	96906	MS25036-115	TERMINAL LUG . . . . .	DOE	EA 2
11	19	XBFZZ		05395	AV111051-9	BRACKET, CONNECTOR . . . . .	DOE	EA 1
11	20	XBFZZ		05395	AV111051-7	BRACKET, WIRE WELL . . . . .	DOE	EA 1
11	21	PAFZZ		74025	29155-2	JUMPER, INTERCELL . . . . .	DOE	EA 1
11	22	PAFZZ	5940-00-143-5284	96906	MS25036-115	TERMINAL LUG . . . . .	DOE	EA 2
11	23	XBFZZ		74025	29154-5	INSERT . . . . .	DOE	EA 2
11	24	PAFZA	6140-00-033-9659	74025	26349-8	BATTERY CELL . . . . .	DOE	EA 19
11	25	XBFZZ		74025	29154-3	INSERT . . . . .	DOE	EA 1
11	26	PAFZZ		74025	18100-62	WASHER, FLAT . . . . .	DOE	EA 38
11	27	PAFZZ	5310-01-154-6014	74025	15111-88	NUT, PLAIN, HEXAGON . . . . .	DOE	EA 38
11	28	PAFZZ	6150-01-129-6489	74025	16102-128	BUS, CONDUCTOR . . . . .	DOE	EA 12
11	29	XBFZZ		74025	29154-2	INSERT . . . . .	DOE	EA 1
11	30	XBFZZ		05395	AV111052-3	SPACER . . . . .	DOE	EA 1
11	31	PAFZZ	5305-00-052-6763	80205	NAS514P440-8P	SCREW MACHINE . . . . .	DOE	EA 5
11	32	PAFZZ	5310-00-878-3292	96906	MS21043-04	NUT, SELF-LOCKING, EX . . . . .	DOE	EA 5
11	33	XBFZZ		05395	AV111052-1	PAD, TOP . . . . .	DOE	EA 1
11	34	XBFZZ		05395	AV111052-4	SPACER . . . . .	DOE	EA 1

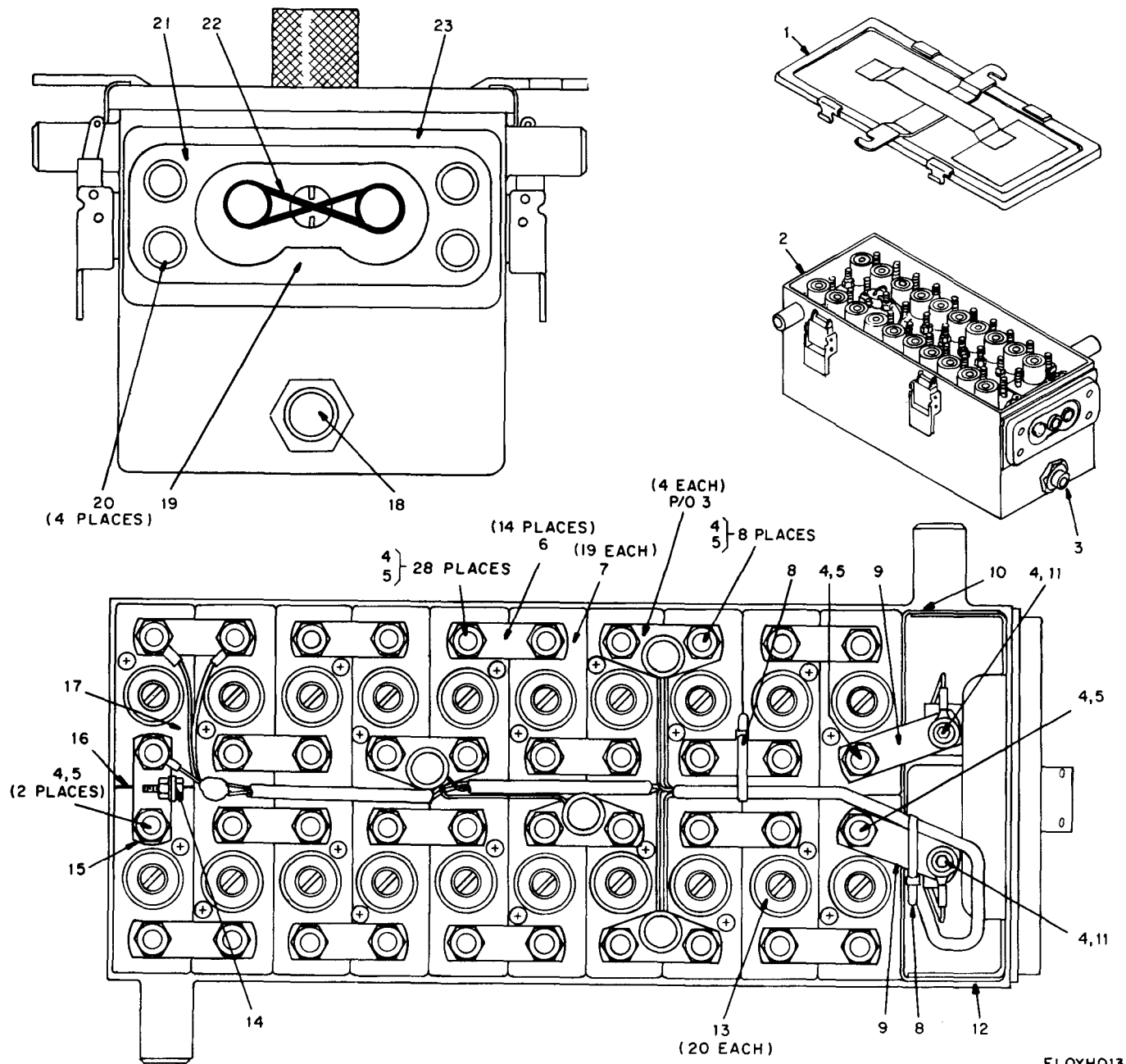


Figure 12. Battery, Storage BB-716/A

ELOYH013



## SECTION II

TM 11-6140-203-30P-2

(1) ILLUSTRATION		(2)	(3)	(4)	(5)	(6) DESCRIPTION	(7)	(8)
(a) FIG NO.	(b) ITEM NO.	SMP CODE	NATIONAL STOCK NUMBER	FSCM	PART NUMBER	USABLE ON CODE	U/M	QTY INC UNIT
						GROUP 00 BATTERY, STORAGE BB-716/A		
12	1	XBFZZ		74025	29810-001	COVER ASSY . . . . .	EJP	EA 1
12	2	XBFZZ		74025	29171-002	BOX ASSY, BATTERY . . . . .	EJP	EA 1
12	3	PAFZZ	6140-01-162-5234	74025	29230-003	TEMPERATURE, SENSOR . . . . .	EJP	EA 1
12	4	PAFZZ	5310-01-024-3336	74025	16128-028	WASHER, SPRING TENS . . . . .	EJP	EA 42
12	5	PAFZZ		74025	15111-058	NUT, PLAIN, HEXAGON . . . . .	EJP	EA 40
12	6	PAFZZ	6150-01-088-6538	74025	16102-143	BUS, CONDUCTOR . . . . .	EJP	EA 14
12	7	PAFZA	6140-01-114-1219	74025	19804-014	BATTERY, STORAGE . . . . .	EJP	EA 19
12	8	PAFZZ		74025	29247-001	CABLE TIE . . . . .	EJP	EA 2
12	9	PAFZZ	6150-01-160-4239	74025	16102-157	BUS, CONDUCTOR . . . . .	EJP	EA 2
12	10	XBFZZ		74025	9988-162	SHIM . . . . .	EJP	EA V
12	11	PAFZZ	5305-00-983-6651	96906	MS16998-27	SCREW, CAP, SOCKET HE. . . . .	EJP	EA 2
12	12	XBFZZ		74025	29172-001	SPACER . . . . .	EJP	EA 1
12	13	PAFZZ	6140-00-081-7825	74025	15208-001	FILLER CAP, BATTERY . . . . .	EJP	EA 20
12	14	PAFZZ	5961-00-080-5234	81349	JAN1N1202RA	SEMI CONDUCTOR DEVI C . . . . .	EJP	EA 1
12	15	PAFZZ	5961-01-163-9014	74025	29824-001	CLAMPING DIODE ASSY . . . . .	EJP	EA 1
12	16	XBFZZ		74025	9988-107	SEPARATOR . . . . .	EJP	EA 1
12	17	PAFZA		74025	29150-002	CELL, LOW CAPACITY . . . . .	EJP	EA 1
12	18	PAFZZ		74025	10113-001	CAP, PROTECTIVE DUST . . . . .	EJP	EA 1
12	19	PAFZZ		74025	16163-011	CONNECTOR, RECEPTAC . . . . .	EJP	EA 1
12	20	PAFZZ		74025	23084-001	SCREW, ASSEMBLED WAS . . . . .	EJP	EA 4
12	21	PAFZZ		74025	26916-001	COVER, BATTERY BOX . . . . .	EJP	EA 1
12	22	PAFZZ	5360-01-041-1546	74025	25908-001	SPRING, HELICAL, EXTE . . . . .	EJP	EA 1
12	23	PAFZZ	5330-00-067-8924	74025	24583-001	GASKET . . . . .	EJP	EA 1

STOCK NUMBER	FIGURE NO.	ITEM NO.	STOCK NUMBER	FIGURE NO.	ITEM NO.
6140-00-033-9659	11	24	6140-00-878-9144	6	1
5305-00-052-6763	11	31	6140-00-878-9144	10	1
5305-00-054-6669	6	2	6140-00-881-6887	3	11
5305-00-054-6669	10	2	6140-00-881-6887	3	11
5310-00-058-3599	11	4	6140-63-931-4158	7	
5330-00-067-8924	12	23	6140-00-933-4286	6	5
5961-00-080-5234	12	14	6140-00-933-4286	8	2
6140-00-081-7825	12	13	6140-00-933-4286	5	2
6140-00-110-3492	1	11	6140-00-933-4286	10	6
5935-00-114-4247	5	1	5940-00-933-4336	5	7
5935-00-114-4247	9	1	5940-00-933-4336	6	9
5940-00-143-5284	11	18	5940-00-933-4336	8	1
5940-00-143-5284	11	22	5940-00-933-4536	9	7
5306-00-156-2336	7	6	5940-00-933-4336	10	7
6150-00-168-1293	1	17	5940-00-933-8481	7	Y
5340-00-178-1542	6	10	5940-00-933-8482	7	5
5340-00-178-1542	8	4	5940-00-933-8483	7	4
5340-00-178-1542	10	8	5940-00-933-8484	7	3
5935-00-198-3971	1	5	5310-00-950-5709	1	b
6140-00-204-2737	1	11	5310-00-950-5709	5	5
6140-00-204-2739	4	11	5310-00-950-5705	6	8
5330-00-205-0201	1	4	5310-00-950-5709	8	7
5330-00-205-0201	3	4	5310-00-950-5709	9	5
5330-00-205-0201	4	4	5310-00-950-57(79)	10	9
5330-00-205-0201	7	12	5940-00-950-9324	1	12
5330-00-205-0201	9	10	5940-00-950-9325	1	13
5940-00-363-8406	5	6	5940-00-950-9329	1	15
5940-00-363-8406	9	6	5940-0*950-9330	1	14
5935-00-435-1779	10	5	5305-00-958-5473	1	9
5310-00-550-0286	1	10	5305-00-958-5473	3	09
5310-00-550-0286	3	10	5305-00-958-5473	4	9
5310-00-550-0286	4	10	5305-00-958-5473	5	9
5310-00-550-0286	5	8	5305-00-958-5473	7	11
5310-00-550-0286	7	10	5305-00-958-5473	9	9
5310-00-550-0286	9	8	5310-00-976-4621	1	7
5120-00-618-5305	2	1	5310-00-976-4621	b	7
5935-00-671-8347	8	3	5310-00-976-4621	8	6
5935-00-673-3621	3	5	5310-00-976-4621	9	4
5935-00-673-3621	4	5	5310-00-976-4621	10	4
5935-00-673-3621	7	2	5305-00-976-4622	1	8
6140-00-676-3376	2	2	5305-00-976-4622	5	3
6140-00-676-9024	4	11	5305-00-976-4622	6	6
5305-00-680-6391	11	6	5305-00-976-4622	8	5
5940-00-681-2898	4	15	5305-00-976-4622	9	3
5935-00-687-1365	6	4	5305-00-976-4622	10	10
5330-00-718-6249	3	1	5330-00-977-1023	1	1
5330-00-731-7366	2	3	5310-00-982-5000	11	5
5330-00-735-6454	4	1	5305-00-983-6651	3	8
5310-00-739-4470	3	7	5305-00-983-6651	4	8
5310-00-739-4470	4	7	5305-00-983-6651	12	11
5310-00-739-4470	7	8	5310-01-024-3336	12	4
5310-00-837-6117	3	6	5360-01-041-1546	12	22
5310-00-837-6117	4	6	6140-01-071-8560	7	1
5310-00-837-6117	7	7	6140-01-072-3124	1	11
5305-00-841-2942	11	3	6140-01-073-3206	5	2
5940-00-841-6626	3	13	6150-01-088-6538	12	6
5940-00-841-6626	4	16	6140-01-114-1219	12	7
5940-00-841-6629	3	14	6150-01-129-6489	11	28
5940-00-841-6629	4	17	6140-01-143-9075	1	16
5940-00-845-4925	4	12	5330-01-149-7245	5	10
5940-00-845-4927	4	14	6140-01-150-5380	10	6
5940-00-845-4931	4	13	6150-01-152-8915	11	12
9330-00-877-2872	4	3	5310-01-154-6014	11	27
5310-00-878-3292	11	32	6150-01-160-4239	12	Y
6140-00-878-9143	6	3	6140-01-162-5234	12	3
6140-00-878-9143	10	3	5961-01-163-9014	12	15

FSCM	PART NUMBER	FIGURE NO.	ITEM NO.	FSCM	PART NUMBER	FIGURE NO.	ITEM NO.
88044	AN3C3A	7	6	80058	BB-600/A	3	11
05395	AV111051-7	11	20	74025	BB-648/A	7	1
05395	AV111051-9	11	19	80058	BB-648A/A	7	1
05395	AV111052-1	11	33	80058	BB-652/A	6	5
05395	AV111052-3	11	30	80058	BB-652/A	8	2
05395	AV111052-4	11	34	80058	BB-652/A	9	2
05395	AV111054-1	11	7	80058	BB-652/A	10	b
80058	BB-475/A	5	2	80058	BB-652A/A	10	6
80058	BB-599A/A	1	11	90634	B551-11873-1	5	7

FSCM	PART NUMBER	FIGURE ITEM		FSCM	PART NUMBER	FIGURE ITEM	
		NO.	NO.			NO.	NO.
90634	8551-11873-1	6	9	14025	16163-7	3	5
90634	8551-11873-1	8	1	74025	16163-7	4	5
90634	8551-11873-1	9	7	74025	16163-7	7	2
90634	8551-11873-1	10	<b>7</b>	<b>01002</b>	<b>162A7819-22</b>	1	7
90634	8551-11873-2	6	10	01002	<b>162A7819-22</b>	6	7
90634	8551-11873-2	8	4	01002	<b>162A7819-22</b>	8	6
90634	8551-11873-2	10	<b>8</b>	24446	<b>162A7819-22</b>	9	4
90634	8551-92554	10	5	24446	<b>162A7819-22</b>	10	4
71468	CA02A420-8S	<b>11</b>	2	<b>01002</b>	<b>162A7820-22</b>	1	6
90634	C551-11931	6	1	01002	<b>162A7820-22</b>	5	5
90634	C551-11931	10	1	01002	<b>162A7820-22</b>	9	5
09052	D9762	10	3	19209	<b>162A7820P22</b>	6	8
90634	D9762	6	3	19209	<b>162A7820P22</b>	8	7
61349	JAN1N1202RA	<b>12</b>	14	19209	<b>162A7820P22</b>	10	9
80063	MIL-M-20693	<b>1</b>	3	01002	<b>162A7822</b>	1	2
80063	MIL-M-20693	3	3	19209	<b>162A8089-21</b>	1	4
80063	MIL-M-20693	<b>5</b>	4	19209	<b>162A8089-21</b>	3	4
80063	MIL-M-20693	9	<b>11</b>	19209	<b>162A8089-21</b>	4	<b>4</b>
81349	MILM20693	4	3	19209	<b>162A8089-21</b>	7	<b>12</b>
56906	MS16998-27	3	8	<b>19209</b>	<b>162A8089-21</b>	9	10
96906	MS16998-27	4	<b>8</b>	74025	16934-001	2	2
96906	MS16998-27	12	11	34122	16979	2	<b>1</b>
96906	MS21043-04	<b>11</b>	32	90634	<b>17180</b>	1	11
96906	MS21045C04	11	5	01002	<b>178A3227P22</b>	<b>1</b>	12
96906	MS25036-115	11	18	01002	<b>178A3227P23</b>	1	<b>13</b>
96906	MS25036-115	11	22	<b>01002</b>	<b>178A3227P24</b>	1	15
96906	MS27308-1	1	<b>17</b>	01002	<b>178A3227P25</b>	<b>1</b>	14
96906	MS35190-251	1	9	24446	<b>178A3325P21</b>	<b>1</b>	1
96906	MS35190-251	3	09	74025	18006-1	<b>4</b>	13
96906	MS35190-251	4	9	74025	18100-62	<b>11</b>	26
96906	MS35190-251	5	9	<b>74025</b>	18191-15	3	11
96506	MS35190-251	7	<b>11</b>	74025	19804-014	12	7
96906	MS35190-251	9	9	74025	23084-001	12	20
96906	MS35335-57	<b>11</b>	4	01002	<b>232A2124P23</b>	1	<b>8</b>
96906	MS35336-15	1	10	01002	<b>232A2124P23</b>	5	3
96906	MS35336-15	3	10	<b>01002</b>	<b>232A2124P23</b>	6	6
96906	MS35336-15	4	10	01002	<b>232A2124P23</b>	8	5
96906	MS35336-15	5	8	01002	<b>232A2124P23</b>	9	<b>3</b>
96906	MS35336-15	7	10	01002	<b>232A2124P23</b>	10	<b>10</b>
96906	MS35336-15	9	8	74025	23462	4	2
96906	MS51957-44	<b>6</b>	2	74025	23573-1	4	1
96906	MS51957-44	<b>10</b>	2	74025	23573-2	3	1
05593	N-200811	1	5	74025	23591-1	3	7
80205	NAS1403-2	11	b	74025	23591-1	4	7
80205	NAS514P440-8P	<b>11</b>	31	<b>74025</b>	23591-1	7	<b>8</b>
80205	NAS600-8P	11	3	74025	24583-001	12	<b>23</b>
80063	SCL6853/2-3	<b>3</b>	<b>12</b>	74025	25908-001	12	22
80063	SCL6853/3-4	3	2	74025	26349-8	11	24
05395	S10009C3	<b>11</b>	10	74025	26916-001	12	21
74025	X16102-52	4	15	74025	27420	1	11
74025	X16102-53	4	12	74025	28272-001	<b>5</b>	10
14025	X16102-56	4	16	74025	2900	5	1
74025	X16102-6	<b>3</b>	14	74025	2900	9	1
74025	X16102-6	4	17	74025	29150-002	12	<b>17</b>
74025	X16102-7	<b>3</b>	13	74025	29153	11	<b>8</b>
74025	X16962-4	4	11	74025	29154-1	<b>11</b>	15
"17820	10-87324-9S	6	4	74025	<b>29154-2</b>	<b>11</b>	<b>29</b>
74025	10113-001	12	18	74025	29154-3	11	25
74025	10343-005	2	3	74025	29154-4	11	<b>17</b>
14025	10371-140	5	6	74025	29154-5	11	23
74025	10371-140	9	6	74025	29154-6	<b>11</b>	<b>16</b>
74025	15089-3	7	3	74025	<b>29154-7</b>	11	14
74025	15111-058	12	5	74025	29154-8	<b>11</b>	<b>13</b>
74025	15111-88	11	27	74025	29155-2	<b>11</b>	<b>21</b>
74025	15208-001	12	13	74025	29171-002	12	2
74025	16102-10	7	4	74025	29172-001	12	12
74025	16102-127	11	11	74025	29230-003	12	3
74025	16102-128	<b>11</b>	<b>28</b>	<b>74025</b>	29247-901	<b>12</b>	8
74025	16102-134	11	12	74025	29255-1	<b>11</b>	1
74025	16102-143	12	6	74025	29644	<b>11</b>	9
74025	16102-157	12	9	74025	29810-001	12	1
74025	16102-18	7	5	74025	<b>29817-001</b>	<b>1</b>	16
74025	16102-83	7	9	74025	<b>29824-001</b>	12	<b>15</b>
74025	16128-028	<b>12</b>	4	74025	30500-002	4	14
74025	16128-1	3	6	19209	<b>43B022AC02</b>	4	<b>11</b>
74025	16128-1	4	6	97151	<b>7545314-10</b>	8	3
74025	16128-1	7	7	74025	9988-107	12	16
74025	16163-011	12	19	74025	9988-162	<b>12</b>	10



RECOMMENDED CHANGES TO EQUIPMENT TECHNICAL PUBLICATIONS



THEN... JOT DOWN THE DOPE ABOUT IT ON THIS FORM. CAREFULLY TEAR IT OUT, FOLD IT AND DROP IT IN THE MAIL!

SOMETHING WRONG WITH THIS PUBLICATION?

FROM: (PRINT YOUR UNIT'S COMPLETE ADDRESS)

Commander  
Stateside Army Depot  
ATTN: AMSTA-US  
Stateside, N.J. 07703

DATE SENT

10 July 1975

PUBLICATION NUMBER

TM 11-5840-340-20P

PUBLICATION DATE

23 Jan 78

PUBLICATION TITLE

Radar Set AN/PRC-76

BE EXACT... PIN-POINT WHERE IT IS

PAGE NO	PARA-GRAPH	FIGURE NO	TABLE NO
33			
44		19	
45			

IN THIS SPACE TELL WHAT IS WRONG AND WHAT SHOULD BE DONE ABOUT IT:

For item 2, change the NSN to read: 5835-00-134-9186.  
Reason: Accuracy.

Identify the cover on the junction box (item no. 5).  
Reason: It is a separate item and is not called out on figure 19.

Add the cover of the junction box as an item in the listing for figure 19.  
Reason: Same as above

SAMPLE

PRINTED NAME, GRADE OR TITLE, AND TELEPHONE NUMBER

SSG I. M. DeSpirit of 999-1776

SIGN HERE

TEAR ALONG PERFORATED LINE

FILL IN YOUR  
UNIT'S ADDRESS

FOLD BACK

DEPARTMENT OF THE ARMY

OFFICIAL BUSINESS

**SAMPLE**

Commander  
US Army Communications-Electronics Command  
and Fort Monmouth  
ATTN: DRSEL-ME-MP  
Fort Monmouth, New Jersey 07703

TEAR ALONG PERFORATED LINE

RECOMMENDED CHANGES TO EQUIPMENT TECHNICAL PUBLICATIONS



**THEN...JOT DOWN THE DOPE ABOUT IT ON THIS FORM. CAREFULLY TEAR IT OUT, FOLD IT AND DROP IT IN THE MAIL.**

**SOMETHING WRONG WITH THIS PUBLICATION?**

FROM: (PRINT YOUR UNIT'S COMPLETE ADDRESS)

DATE SENT

PUBLICATION NUMBER

TM 11-6140-203-30P-2

PUBLICATION DATE

PUBLICATION TITLE

Aircraft Nickel Cadmium Batteries

**BE EXACT PIN-POINT WHERE IT IS**

PAGE NO.	PARA-GRAPH	FIGURE NO.	TABLE NO.

**IN THIS SPACE TELL WHAT IS WRONG AND WHAT SHOULD BE DONE ABOUT IT:**

TEAR ALONG PERFORATED LINE

PRINTED NAME GRADE OR TITLE AND TELEPHONE NUMBER

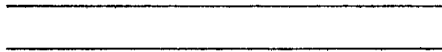
SIGN HERE

FILL IN YOUR  
UNIT'S ADDRESS



FOLD BACK

DEPARTMENT OF THE ARMY



OFFICIAL BUSINESS

TEAR ALONG PERFORATED LINE

Commander  
US Army Communications-Electronics Command  
and Fort Monmouth  
ATTN: DRSEL-ME-MP  
Fort Monmouth, New Jersey 07703



RECOMMENDED CHANGES TO EQUIPMENT TECHNICAL PUBLICATIONS



THEN...JOT DOWN THE DOPE ABOUT IT ON THIS FORM. CAREFULLY TEAR IT OUT, FOLD IT AND DROP IT IN THE MAIL.

SOMETHING WRONG WITH THIS PUBLICATION?

FROM: (PRINT YOUR UNIT'S COMPLETE ADDRESS)

DATE SENT

PUBLICATION NUMBER

TM 11-6140-203-30P-2

PUBLICATION DATE

PUBLICATION TITLE

Aircraft Nickel Cadmium Batteries

BE EXACT PIN-POINT WHERE IT IS

PAGE NO.	PARA-GRAPH	FIGURE NO.	TABLE NO.

IN THIS SPACE TELL WHAT IS WRONG AND WHAT SHOULD BE DONE ABOUT IT:

PRINTED NAME GRADE OR TITLE AND TELEPHONE NUMBER

SIGN HERE

TEAR ALONG PERFORATED LINE

FILL IN YOUR  
UNIT'S ADDRESS

FOLD BACK

DEPARTMENT OF THE ARMY

OFFICIAL BUSINESS

Commander  
US Army Communications-Electronics Command  
and Fort Monmouth  
ATTN: DRSEL-ME-MP  
Fort Monmouth, New Jersey 07703

TEAR ALONG PERFORATED LINE

RECOMMENDED CHANGES TO EQUIPMENT TECHNICAL PUBLICATIONS



THEN...JOT DOWN THE DOPE ABOUT IT ON THIS FORM. CAREFULLY TEAR IT OUT, FOLD IT AND DROP IT IN THE MAIL.

SOMETHING WRONG WITH THIS PUBLICATION?

FROM: (PRINT YOUR UNIT'S COMPLETE ADDRESS)

DATE SENT

PUBLICATION NUMBER

TM 11-6140-203-30P-2

PUBLICATION DATE

PUBLICATION TITLE

Aircraft Nickel Cadmium Batteries

BE EXACT PIN-POINT WHERE IT IS

PAGE NO.

PARA-GRAPH

FIGURE NO.

TABLE NO.

IN THIS SPACE TELL WHAT IS WRONG AND WHAT SHOULD BE DONE ABOUT IT:

TEAR ALONG PERFORATED LINE

PRINTED NAME GRADE OR TITLE AND TELEPHONE NUMBER

SIGN HERE

FILL IN YOUR  
UNIT'S ADDRESS

FOLD BACK

DEPARTMENT OF THE ARMY

\_\_\_\_\_  
\_\_\_\_\_

OFFICIAL BUSINESS

Commander  
US Army Communications-Electronics Command  
and Fort Monmouth  
ATTN: DRSEL-ME-MP  
Fort Monmouth, New Jersey 07703

TEAR ALONG PERFORATED LINE

By Order of the Secretary of the Army:

Official:

**ROBERT M. JOYCE**  
*Major General, United States Army*  
*The Adjutant General*

**JOHN A. WICKMAN JR.**  
*General, United States Army*  
*Chief of Staff*

**DISTRIBUTION:**

To be distribution in accordance with DA Form 12-36A requirements for Aircraft Nickel Cadmium Batteries

\*U.S .Government PRINTING OFFICE : 1994 0 - 300-421 (01160)





